

viccarbe

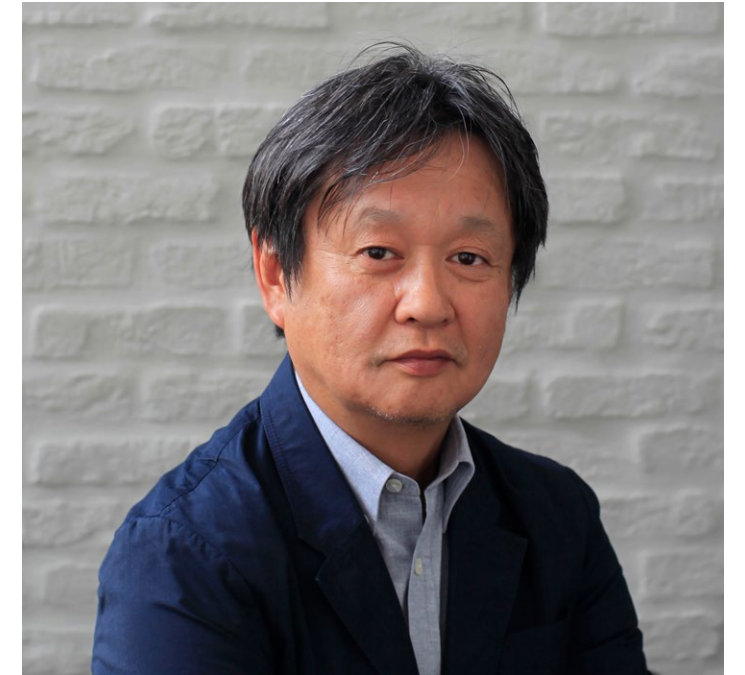
Common

Designed by Naoto Fukasawa

Catalogue - EN

V01

2013



Naoto Fukasawa

Naoto Fukasawa, born 1956 in Yamanashi Prefecture, Japan, studied art and 3D-design at Tama Art University in Tokyo. He worked as a designer for Seiko-Epson until 1988 and for ID-two in San Francisco from 1989-96. After returning to Japan in 1996, he was head of the firm IDEO's Tokyo office and several years later he opened his own office, Naoto Fukasawa Design, in Tokyo. Since 2001, when he also became a consultant for the MUJI company, his primary focus has been the design of household products and electronic devices.

COMMON

Comfort will remain

Bench designed by Naoto Fukasawa, 2013



"Imagine two strangers sharing the same space". This is how Naoto Fukasawa describes the Common Bench in his book Embodiment. Luxury today is measured in the level of enjoyment that the user experiences in a space. No distractions, no restrictions. For this reason, positive behaviors, forms and emotions

contribute to the person's feeling of comfort in external spaces.

Through its different modules and measurements, Common has been able to maintain a common thread, with a silhouette as rotund as it is curved. It is a pole of attraction where only comfort will remain.

"Through its different modules and measurements, Common has been able to maintain a common thread, with a silhouette as resounding it is curved. It is a pole of attraction where only comfort will remain."

Project: Frigicoll Offices, Barcelona
Interior Design: Isabel López Vilalta
Pictures: Salva López



Positive behaviors, forms and emotions contribute to the user's feeling of comfort in external spaces



Project: The Terrazzo Concrete Office
Design: Tal Goldsmith Fish
Pictures: Amit Geron

Project: Alk Reizen
Design: Clara Claes





Project on this page: Workingshare



Project: Shionogi & Co, Japan



Project: Clínica Alejandría, Spain
Interior&Architecture: ERRE Arquitectos
Pictures:Javier Diez



Project: Farmacia del Ahorro, Mexico
Pictures: Daniel Sánchez Castillo



Project in this page: Aldar Properties HQ, Abu Dhabi
Interior designers: mustard & linen
Pictures: Chris Goldstraw Photography

Project in the right: Unity Technology offices, Canada
Interiors: Shearer Licensed Interior Design
Pictures: Stephanie Jager







Common & Mix

Office, hotels — A design that is capable of balancing spaces, contexts and users, conferring upon them an aura of kindness and serenity.

Project on this page: KL2 Studio, Melbourne.
Interior Design: K2LD Melbourne. Dealer: HUB Furniture. Pictures: Jeremy Wright.

Project up to the right: IA Architect, New York. Interior Design: Anderson/Miller in collaboration with Gensler. Pictures: Isaac Maiselman.

Project on the right: Marriot Marquis Hotel, Chicago. Interior Design: Interior Architects, NY. Pictures: Eric Laignel.



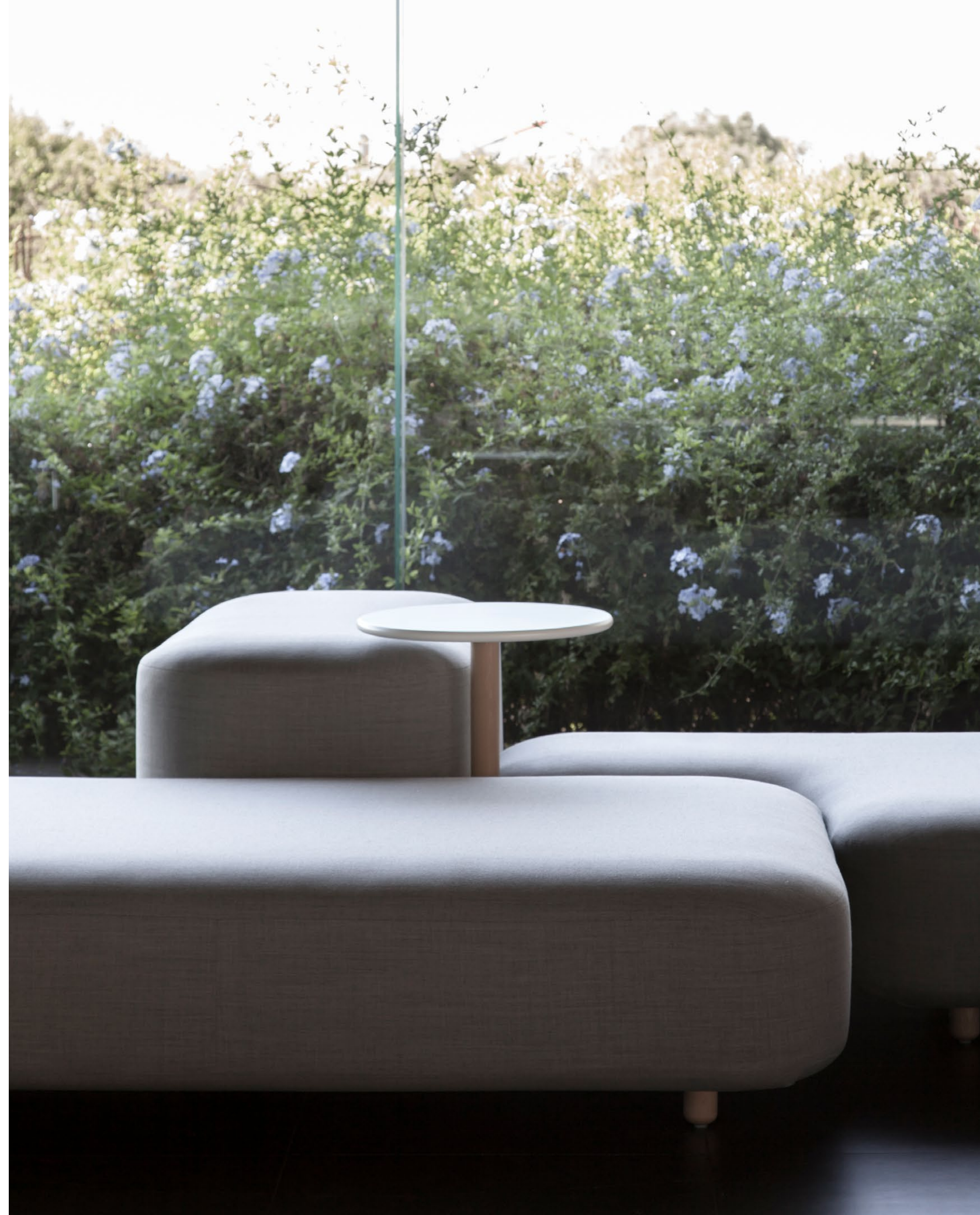
Common

Low table

2013 — The new context we are living in today comes as a blank page, as an opportunity to redefine priorities and the very environments in which we live. Although we usually find the Common table completing the needs of the bench, it also has room in very different spaces. Is it possible to breathe a calmer essence? In times of uncertainty, the foundations of Japanese culture and the value of the timeless will give us back that much needed calm after a storm.



Project: Progetti Store



Mix and match all the options available for Common. You can unleash your imagination to design your bespoke sofa from zero, to best fulfil your requirements or, if you prefer, you can get inspired by a series of pre-defined compositions that will help you bring this collaborative island to life into your projects.

Either way, the final result will be a comfortable bench that fosters interaction, well-being and productivity, all in one. A singular collaborative piece that is able to add a contemporary twist to homes, workplaces, hotels and high-traffic environments all around the world.

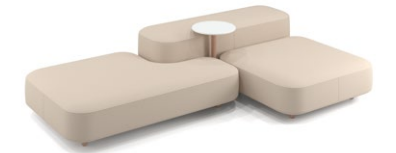
Common bench



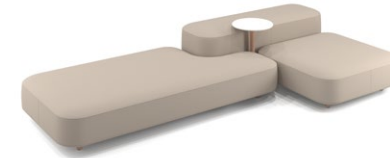
Composition 1



Composition 2



Composition 3



Composition 4



Composition 5



Composition 3

Common low table



Common H45, H17.71*



Common H65, H25.59*

Connectivity (for Common bench)



1. USB port, upholstery

Let's talk

We want to help you find the best designs for your project. Contact us and our team will get back to you as soon as possible.

[CONTACT US](#)