



Interface*Hospitality*

**Welcome to beautiful,
modular flooring design.**

Welcome to Interface Hospitality

You welcome people every day, from all over the world. People who want the perfect experience. It's what makes hospitality both demanding and rewarding.

At Interface Hospitality we understand how a great product can make an experience more enjoyable. We also know a great product can make all the difference in running a successful business.

Using our extensive collection of modular flooring, you can create your unique environments, mixing texture, colour and pattern to create spaces your guests will love to be in.

Whatever your requirements, from first ideas to installation, Interface Hospitality is dedicated to realising your vision. Making it easier for you to provide your guests with an amazing experience.



Welcome to beautiful, modular flooring design.



Carpet Tiles

| | |
|-------------------|----|
| Portmanteau | 5 |
| Luxury Collection | 11 |
| Mod Café | 15 |
| Sampa | 17 |
| City of Angels | 19 |
| A Cut Above | 21 |
| Head Over Heels | 23 |
| Hip Over History | 31 |
| RMS607 | 33 |
| Collins Cottage | 35 |
| Overedge | 37 |
| Haptic | 39 |
| Decibel | 41 |
| Darning | 43 |
| Hydropolis | 45 |

Luxury Vinyl Tile

| | |
|----------------------------|----|
| Iridescence | 49 |
| Level Set® Collection | 51 |
| Look Both Ways™ Collection | 57 |
| nora® Rubber | |
| noraplan® 926 castello | 65 |
| norament® 926 kivo | 67 |
| norament® 926 pado | 69 |
| norament® stairtreads | 71 |
| noraplan® linee | 73 |
| noraplan® unita | 75 |
| Technical Specifications | 83 |



PM19
7968005 EBONY & IVORY
50cm x 100cm



PM19
7968002 COBALT
50cm x 100cm



PM19
7968004 HONEY
50cm x 100cm



PM19
7968003 BERRY
50cm x 100cm



PM19
7968001 ROSEWOOD
50cm x 100cm

Portmanteau

Portmanteau

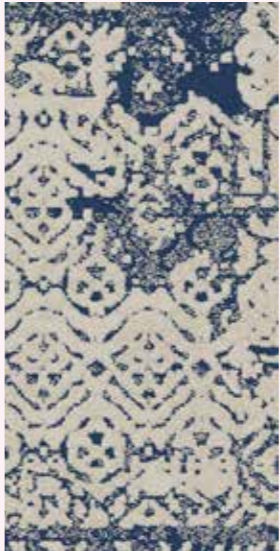
Incrementally diffusing the texture, so transitions can move slowly across the floor or abruptly for dramatic effect. There is a shared texture like a loosely woven textile that beautifully offsets the graphic quality of the other patterns.



PORTMATEAU PM39 8063005 DENIM



PM39
8063001 EBONY & IVORY
50cm x 100cm



PM39
8063005 DENIM
50cm x 100cm



PM39
8063003 PISTACHIO
50cm x 100cm



PM39
8063002 BUTTERSCOTCH
50cm x 100cm



PM39
8063004 SAGE
50cm x 100cm

Portmanteau

Portmanteau



PM49
8064001 ECRU
50cm x 100cm



PM49
8064002 GARDEN STONE
50cm x 100cm



PORTMATEAU PM49 8064002 GARDEN STONE



LC02
2369003 FAWN
100cm x 100cm



LC02
2369002 WALNUT
100cm x 100cm



LC02
2369001 INK
100cm x 100cm



LC02
2369004 CLOUD
100cm x 100cm

Luxury Collection

Two patterns with a lot of texture. Creating patterns that are luxurious.

Luxury Collection

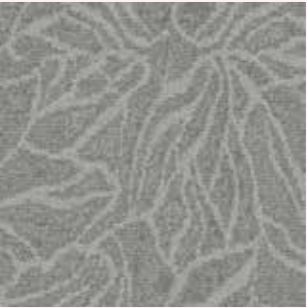




LC05
2377003 HAZEL
50cm x 50cm



LC05
2377005 AQUA
50cm x 50cm



LC05
2377001 SILVER
50cm x 50cm



LC05
2377002 MINT
50cm x 50cm



LC05
2377004 PEACOCK
50cm x 50cm

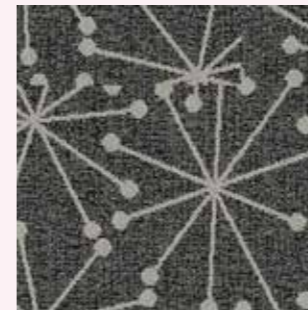
Luxury Collection



MOD CAFÉ 8150004 STAR BLACK

Mod Café

The starburst pattern of this rug evokes dreamy images of outer space and shining stars. This mid-century style looks right at home in any space.



8150004 STAR BLACK
50cm x 50cm



8150003 STAR CHARCOAL
50cm x 50cm



8150002 STAR FLANNEL
50cm x 50cm



8150001 STAR LINEN
50cm x 50cm



Sampa

SAMPA 8192001 ANZAC



8192001 ANZAC
50cm x 50cm



8192005 COAL
50cm x 50cm



8192004 UMBER
50cm x 50cm



8192003 BRICK
50cm x 50cm



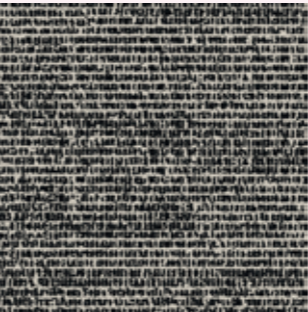
8192002 TROPIC
50cm x 50cm

Sampa

A park is truly the most explicit example of our desire to engage with nature, designing natural settings out of natural elements to recreate the perspective and experience of native landscapes. Sampa brings the park inside with elegant, organic lines, referencing branches, fissures in stone and the veins in a leaf.



8130002 DUSK
50cm x 50cm



8130003 MIDNIGHT
50cm x 50cm



8130001 DAWN
50cm x 50cm

City of Angels

City of Angels

Inspired by the artwork from Agnes Martin, City of Angels is a repetition of short lines loosely formed into a pattern – sometimes stippled, sometimes shifting – to create an abstraction of the grid and a hand-drawn effect.



A CUT ABOVE M0833 7274014 PACIFIC



7274014 PACIFIC
100cm x 100cm



7274012 LEATHER
100cm x 100cm



7274010 AMBER
100cm x 100cm



7274011 CARNATION
100cm x 100cm



7274013 SIENNA
100cm x 100cm

A Cut Above

A Cut Above M0833

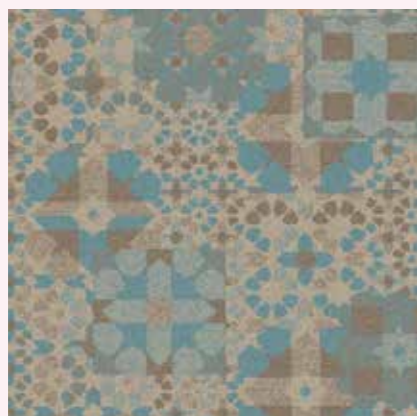
A rich bold patterned surface and lots of colour. The tip sheared face provides luxurious texture.



M0684
6640030 ANTIQUE
100cm x 100cm



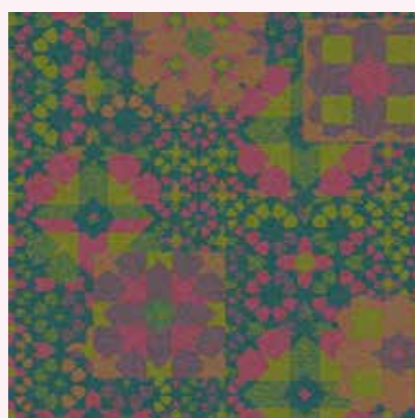
M0684
6640027 SEPIA
100cm x 100cm



M0684
6640026 BEACH
100cm x 100cm



M0684
6640028 TERRACOTTA
100cm x 100cm

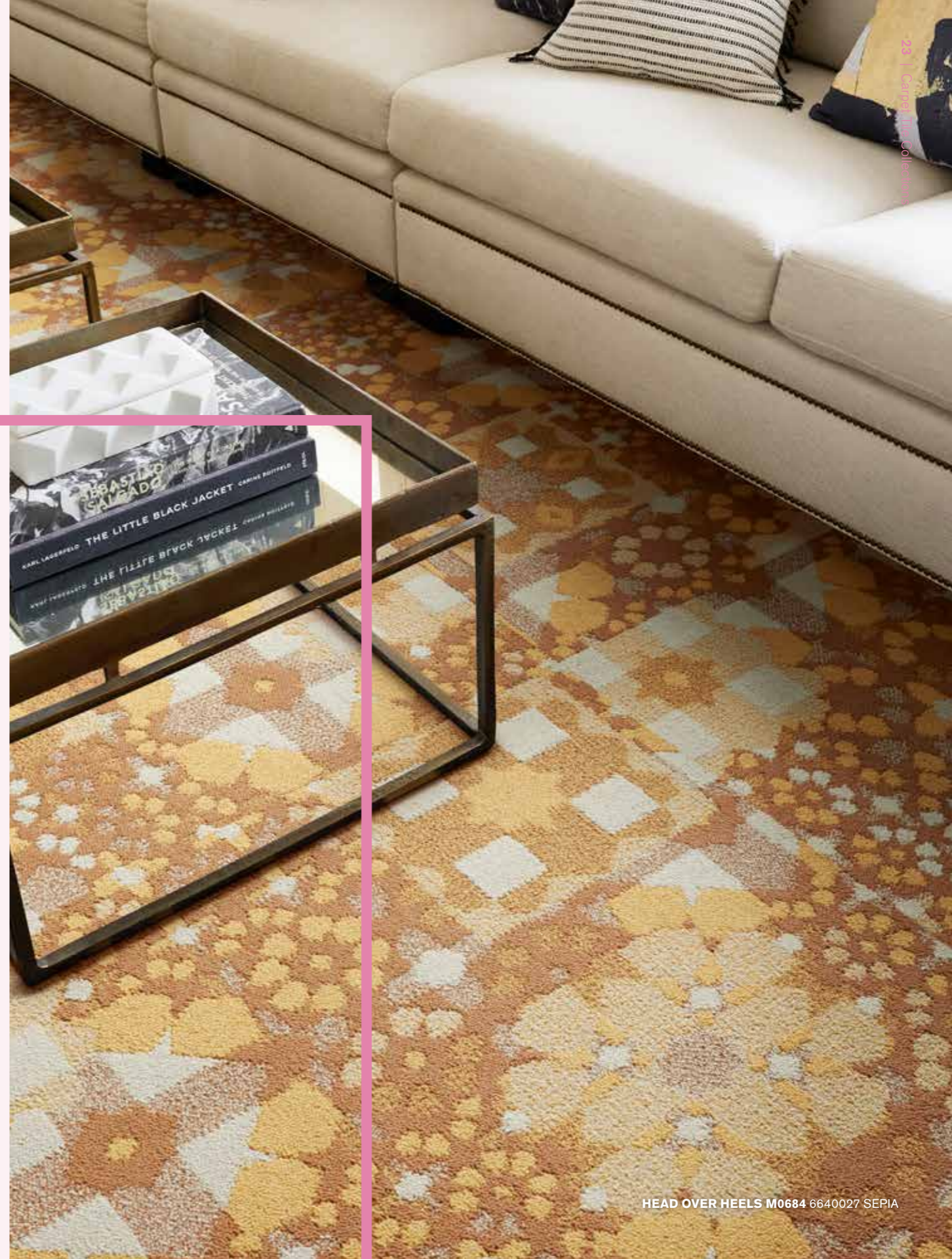


M0684
6640029 CARNIVAL
100cm x 100cm

Head Over Heels

Head Over Heels, a stunningly beautiful collection of bold textured patterns made to inspire.

Head Over Heels





HEAD OVER HEELS M0749 6640035 SPRING



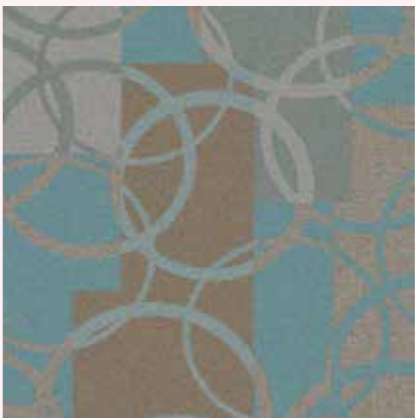
M0749
6640037 SKY
100cm x 100cm



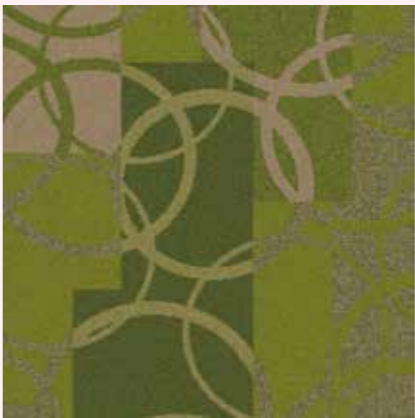
M0749
6640038 FAWN
100cm x 100cm



M0749
6640036 SCARLET
100cm x 100cm



M0749
6640039 POWDER
100cm x 100cm



M0749
6640035 SPRING
100cm x 100cm

Head Over Heels

Head Over Heels



M1032
6640024 LINEN
50cm x 50cm



M1032
6640025 STONE
50cm x 50cm



M1032
6640022 PEBBLE
50cm x 50cm



M1032
6640023 SAGE
50cm x 50cm





HEAD OVER HEELS M0827 6640034 CORNFLOWER



M0827
6640032 AZURE
100cm x 100cm



M0827
6640034 CORNFLOWER
100cm x 100cm



M0827
6640033 SAFFRON
100cm x 100cm



M0827
6640031 FUCHSIA
100cm x 100cm

Head Over Heels

Hip Over History



HIP OVER HISTORY 7191002 PINE



7191002 PINE
100cm x 100cm



7191001 VINTAGE
100cm x 100cm



7191003 BOUQUET
100cm x 100cm



7191004 EDEN
100cm x 100cm



7191005 ORIENT
100cm x 100cm

Hip Over History M0939

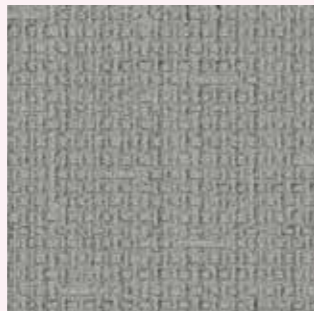
Hip Over History brings a comfortable patina of antique textiles. The patchwork features a tactile and visual texture that gives the illusion of a well-worn floor.



7179003 IVORY
50cm x 50cm



7179001 PEWTER
50cm x 50cm



7179002 TITANIUM
50cm x 50cm

RMS607

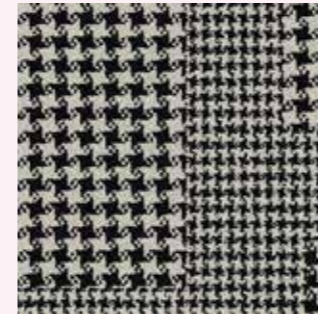
RMS607

Our Guest Room patterns are sophisticated styles, in a neutral palette.

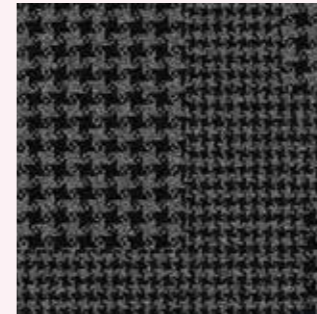




Collins Cottage



8152009 HOUND B&W
50cm x 50cm



8152004 HOUND BLACK
50cm x 50cm



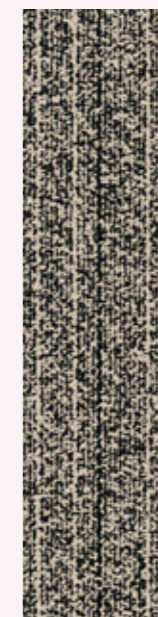
8152003 HOUND CHARCOAL
50cm x 50cm

Collins Cottage

This classic houndstooth pattern rug will perfectly complement any space and decor. It's like giving your father's favorite old blazer a vibrant new life.



OVEREDGE 9271001 B&W OVEREDGE



9271001 B&W OVEREDGE
25cm x 100cm

Overedge

Decibel, Darning, Haptic and Overedge

Are simple high touch textures that recall woven fabrics and rugs.

Haptic



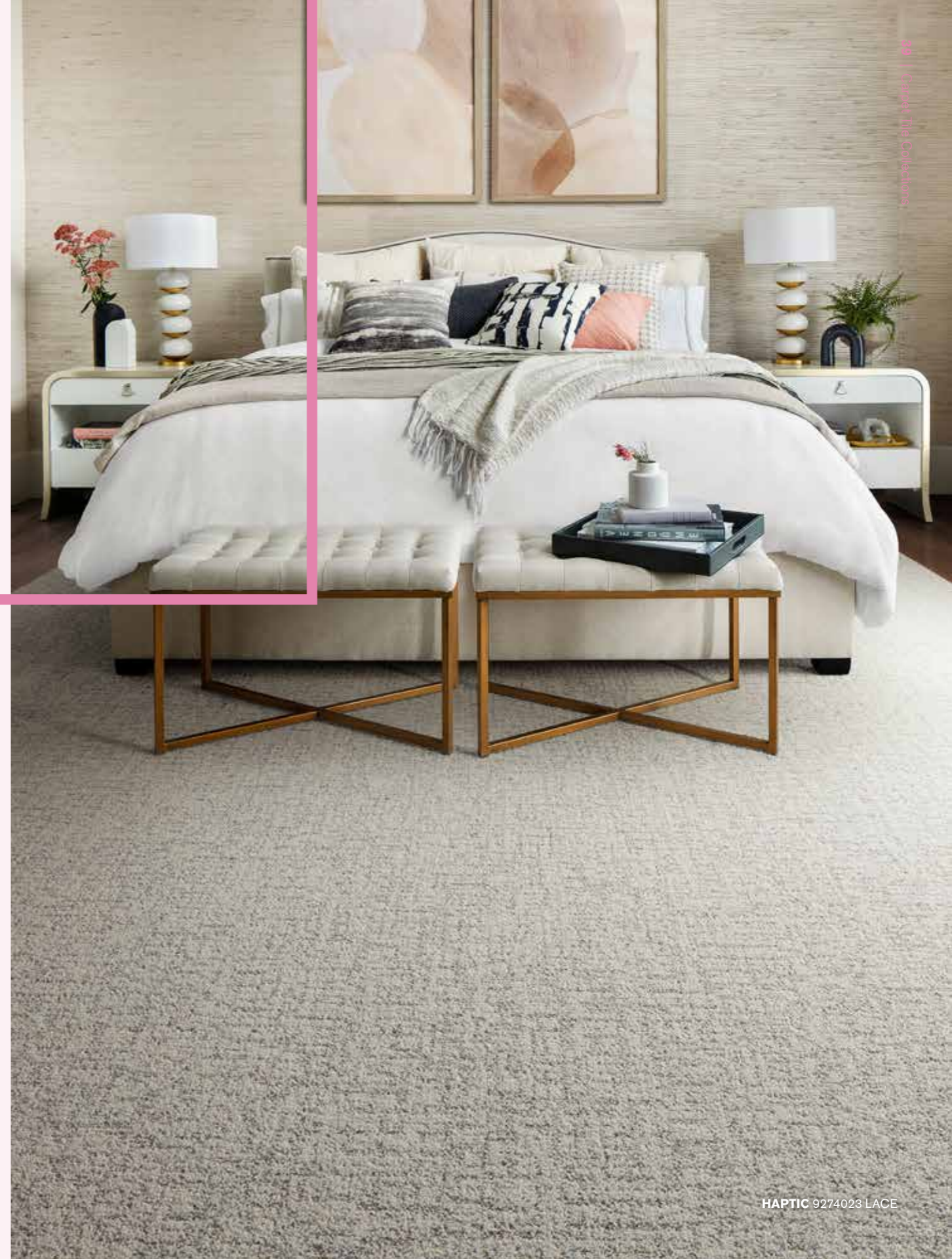
9274023 LACE
25cm x 100cm



9274021 WHISPER
25cm x 100cm



9274022 BALSAM
25cm x 100cm





9275001 B&W DECIBEL
25cm x 100cm

Decibel



DARNING 9273018 SILVER



9273019 ALMOND
25cm x 100cm



9273018 SILVER
25cm x 100cm



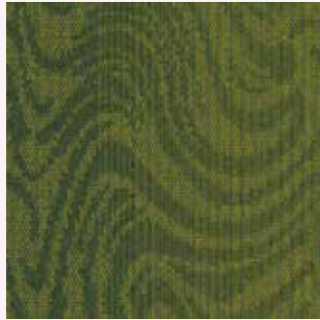
9273020 SAGE
25cm x 100cm

Darning

Hydropolis



4236012 COBALT
50cm x 50cm



4236011 EMERALD
50cm x 50cm



4236009 TANGERINE
50cm x 50cm



4236008 MAGENTA
50cm x 50cm



4236010 OCEAN
50cm x 50cm

Hydropolis

Liquid swirls overlaid with lines of static interference. Matched by a boldness of colour: a vivid palette creates a futuristic rainbow.



Interface[®] Hospitality

Beautiful Luxury Vinyl Tile flooring that performs.

We've designed our LVT and Carpet Tiles to work together seamlessly – with no transition strips. This effortless meeting of hard surfaces, soft textures, endless pattern and colour combinations allows you to create stunning flooring designs.

Together with Interface's truly unique offering of products and services, you'll have everything you need to meet your next design challenge and create spaces people love to be in.

Our LVT designs come with our superior Sound Choice[™] backing. So even hard floors can minimise noise, making it easier for you to create spaces for concentration and focus. And as with all interface flooring, all our products are carbon neutral with Carbon Neutral Floors[™].



Iridescence

IRIDESCENCE A01911 EARTH



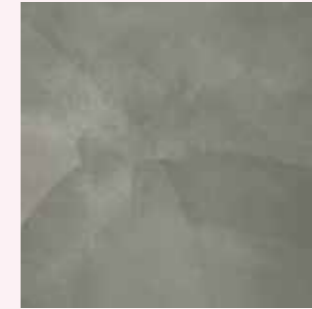
A01901 POLAR



A01905 HERB



A01909 REEF



A01902 SHADOW



A01906 WAVE



A01910 GOLDEN



A01903 CLAY



A01907 FROST



A01911 EARTH



A01904 NIGHT



A01908 INK



A01912 BLOSSOM

Iridescence

Iridescence is inspired by the use of mineral and organic pigments that layer to create diverse hues and abstract painted surfaces. Colours merge with one another in a soft smoky transition that brings a comforting tranquillity to the interior space. The palette encompasses a multitude of colours that excite and inspire.

Level Set® Collection



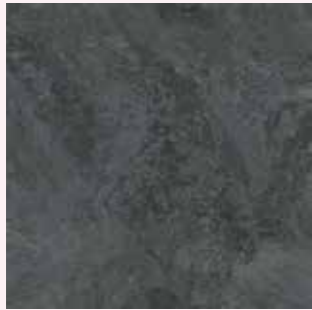
LEVEL SET TEXTURED WOODGRAINS A00415 ANTIQUE OAK

Level Set® Collection

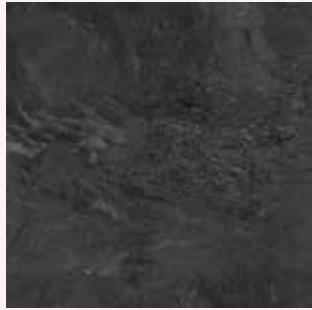
Level Set features 4 types of patterns in a total of 36 colourways: Natural and Textured Woodgrains in the 25 x 100 cm Skinny Planks format, and Stones and Pattern in the 50 x 50 cm square format. The look and feel of the wood patterns ranges from glossy to distressed, while the stone patterns fill the spectrum from subdued to outspoken. Hard and soft tiles come together to create beautiful design options, creating a new world of integrated flooring choices that make contemporary interiors come to life.



LEVEL SET TEXTURED STONES A00311 DISTRESSED CONCRETE



A00103 COOL IMPALA MARBLE



A00101 JET MIST

Level Set[®] Collection Stones



LEVEL SET TEXTURED STONES A00310 DARK CONCRETE



LEVEL SET NATURAL STONES A00103 COOL IMPALA MARBLE



A00304 EMPERADOR GRAY



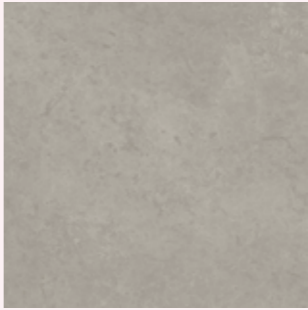
A00301 POLISHED CEMENT



A00302 COOL POLISHED CEMENT



A00303 WARM POLISHED CEMENT



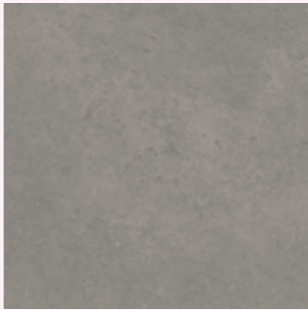
A00308 LIGHT CONCRETE



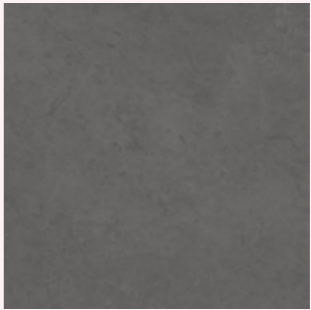
A00311 DISTRESSED CONCRETE



A00307 CHESTNUT HORSEHAIR



A00309 MEDIUM CONCRETE



A00310 DARK CONCRETE



A00214 BAMBOO



A00212 CEDAR



A00210 TEAK



A00204 BEECH



A00203 CHESTNUT



A00208 SAND DUNE



A00207 WASHED WHEAT



A00206 WINTER GREY



A00205 STORM



A00201 BLACK WALNUT



LEVEL SET NATURAL WOODGRAINS A00204 BEECH

Level Set®
Collection
Woodgrains



LEVEL SET TEXTURED WOODGRAINS A00214 BAMBOO



A00417 SILVER DUNE



A00416 ANTIQUE DARK OAK



A00405 GREY DUNE



A00418 CHARCOAL DUNE



A00423 RUSTIC ASH



A00421 RUSTIC OAK



A00406 ANTIQUE LIGHT OAK



A00407 WHITE WASH



A00415 ANTIQUE OAK



A00419 ANTIQUE ASH OAK



A00403 DISTRESSED HICKORY



A00414 ANTIQUE MAPLE



A00424 RUSTIC BIRCH



A00420 RUSTIC CASHEW



A00422 RUSTIC HICKORY

Look Both Ways™ Collection

Look Both Ways™ Collection

Look Both Ways is a collection of LVT and carpet tile patterns combining Zen-like purity with playfulness. Marrying purpose and function with your intention, these styles create landscapes that perform and delight in infinite ways.

Walk of Life, the bedrock of the LVT collection, is gritty, not polished. Sharing the same urban grey palette, Walk the Aisle sparkles with a luminescent fleck that energizes the surface. Walk About appears carved in ways that conjure pattern-love from the 1920s, 1980s, and today. And finally Walk on By is a vision of pure joy in brights & neutrals. Step, walk or run, but definitely look both ways for design inspiration.



WALK THE AISLE A01403 COOL ASH

WALK ABOUT A01402 PUMICE

Walk of Life



WALK OF LIFE A01203 COOL ASH
WALK ABOUT A01403 COOL ASH



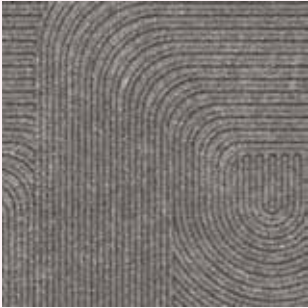
WALK ABOUT A01404 CARBON WALK OF LIFE A01203 COOL ASH



A01401 WARM ASH



A01402 PUMICE



A01403 COOL ASH



A01404 CARBON

Walk About



A01201 WARM ASH

A01202 PUMICE

A01204 CARBON

A01203 COOL ASH

A01205 CHARCOAL



Walk on By



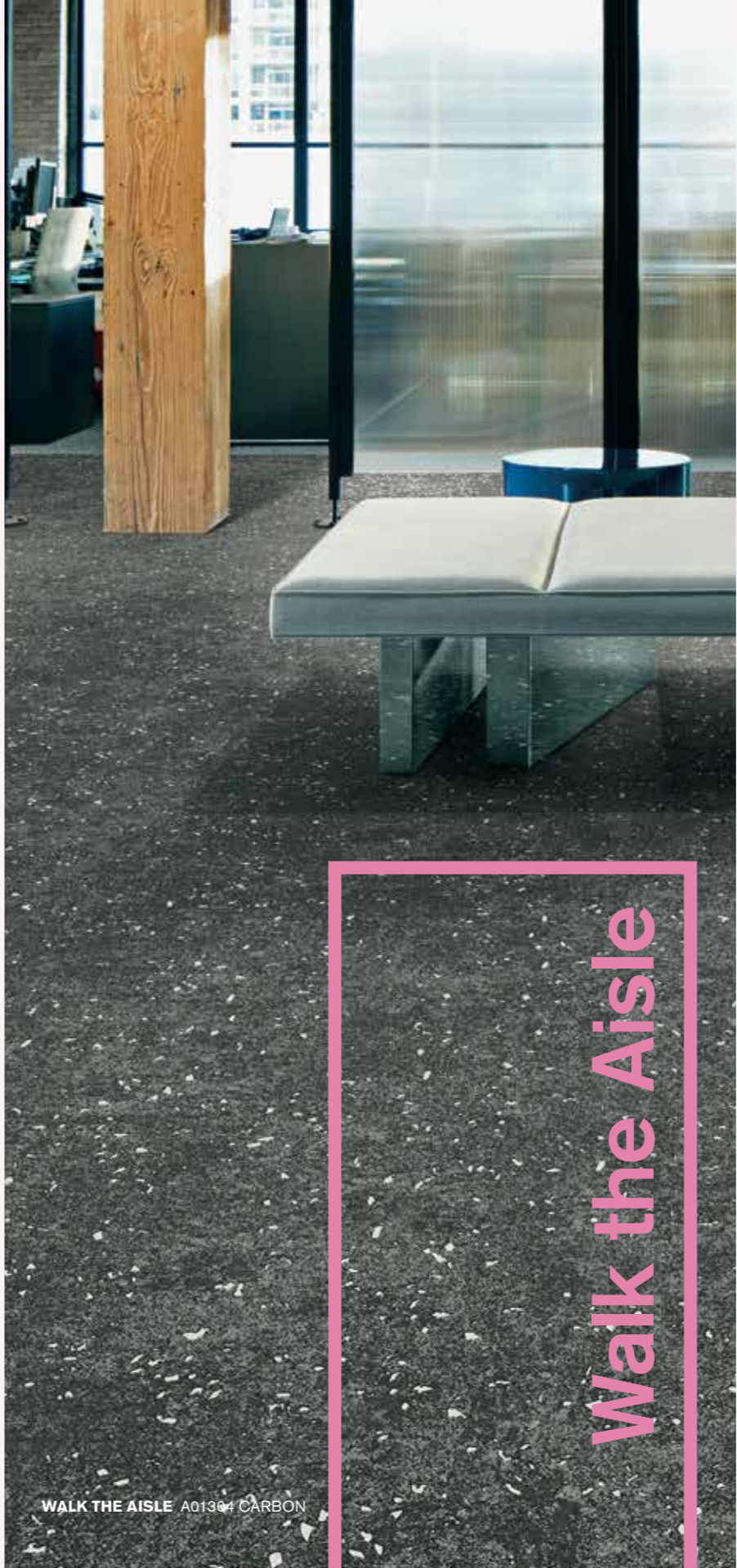
WALK ON BY A01501 POLYCHROME



A01501 POLYCHROME

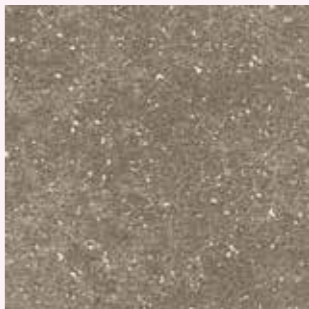


A01502 MONOCHROME

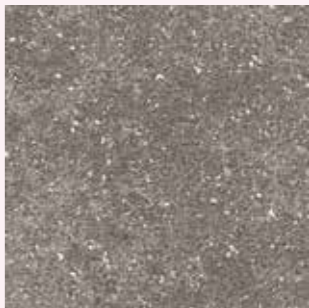


WALK THE AISLE A01304 CARBON

Walk the Aisle



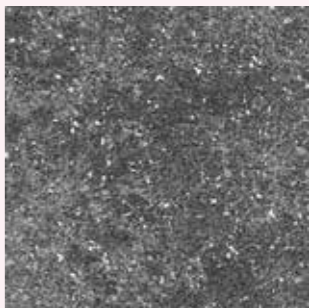
A01301 WARM ASH



A01302 PUMICE



A01303 COOL ASH



A01304 CARBON

Rubber Flooring

Everyone aspires to individuality.

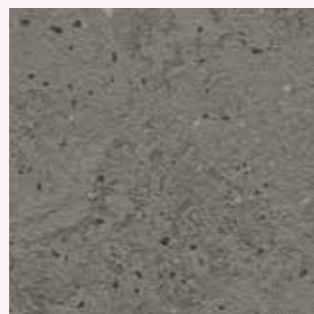
Why should this claim stop at the floor covering?

Our two product lines norament® and noraplan® form a perfectly practical synthesis of design, functionality, and environmental compatibility. We are therefore convinced that we can offer our customers the perfect solution for every need and creative idea.





5351



5352



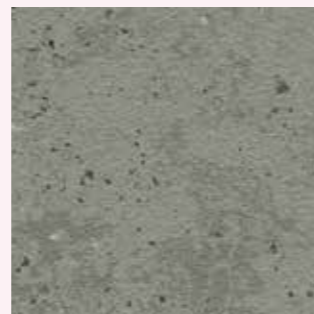
5353



5354



5355



5356



5357

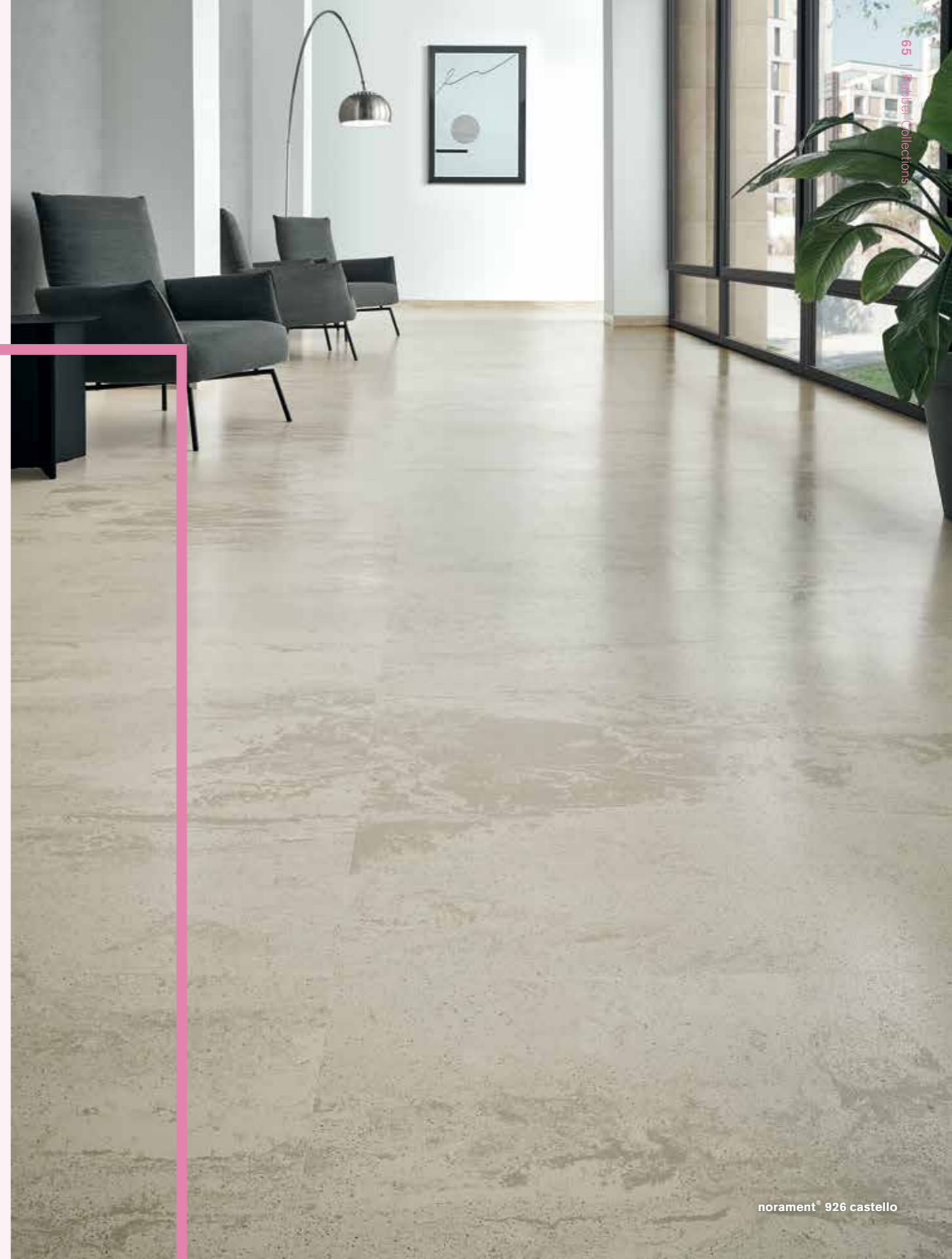


5358

norament® 926 castello

A warm, acoustic-improving alternative to natural stone was the inspiration behind this resilient rubber flooring. Eight timeless subtle, marbled colours with a slightly structured two-tone surface offer you a range that is sure to complement any building from modern to historical, adding a highly representative look.

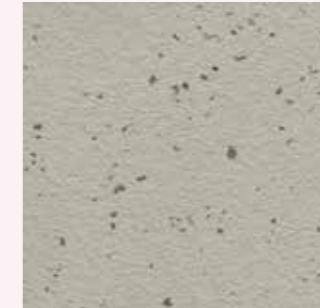
norament® 926 castello



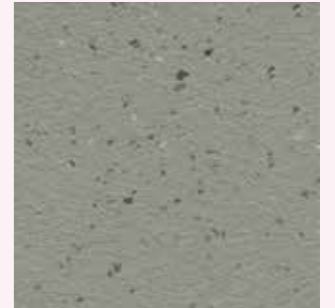
norament® 926 kivo

In modern design and architecture, inspiring ideas often derive from authentic, original elements. Highly creative workspaces of today often prefer referencing the industrial past. norament 926 kivo is the flooring that perfectly resonates with this modern classic atmosphere.

norament® 926 kivo



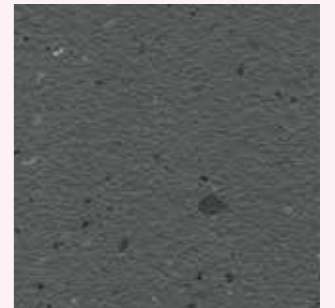
5361



5362



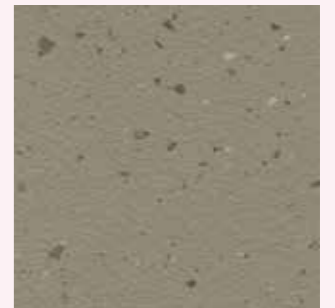
5363



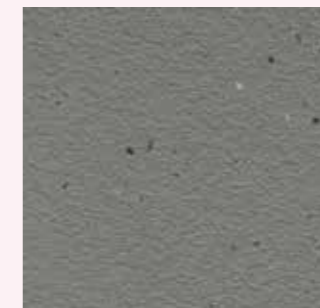
5364



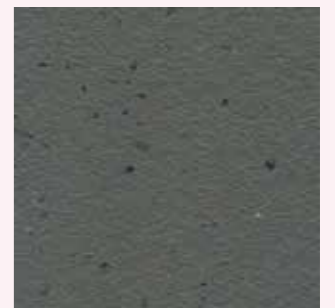
5365



5366



5367



5368

norament® 926 pado

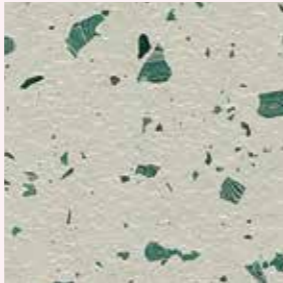
norament 926 pado is a a vivid granular design inspired by ancient terrazzo with a slightly structured two-tone surface in various designs. Choose from neutral and elegant or colourful and contrasting to create a unique floor aesthetic.



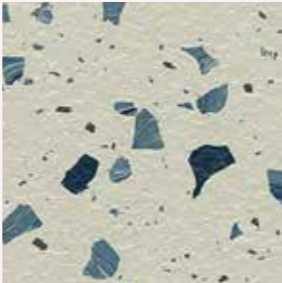
5501



5502



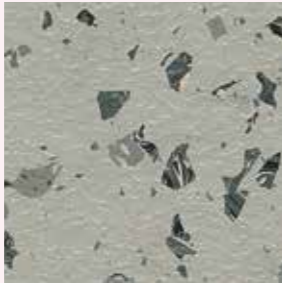
5503



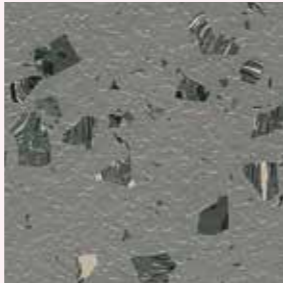
5504



5505



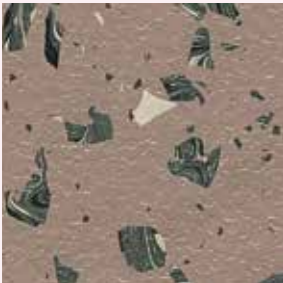
5506



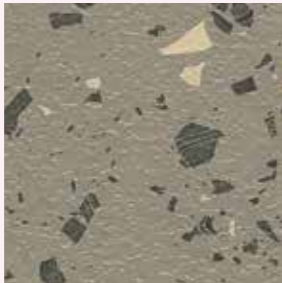
5507



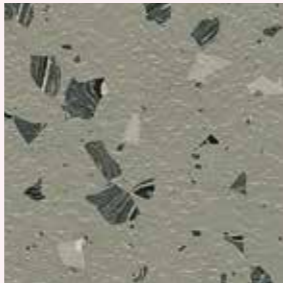
5508



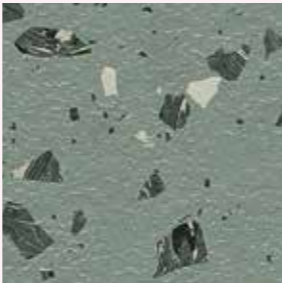
5509



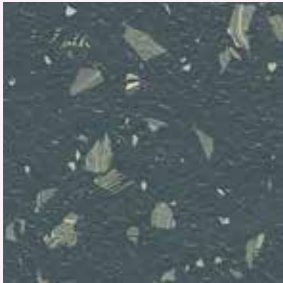
5510



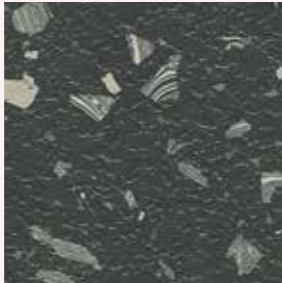
5511



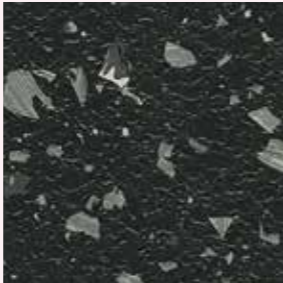
5512



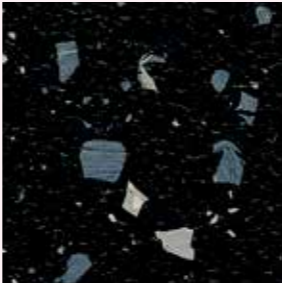
5513



5514



5515



5516

**norament®
926 pado**

Stairtread norament® 926

One-coloured with classic round pastille for extremely heavy-traffic stairwell areas. Improves footfall sound absorption by 12 dB.



0214



0319



0733



0890



0007



0882



2074



6172



0884



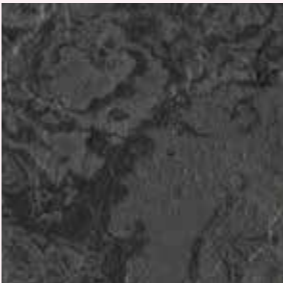
0749



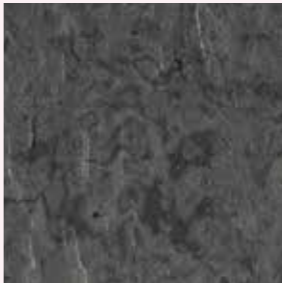
0716



0702



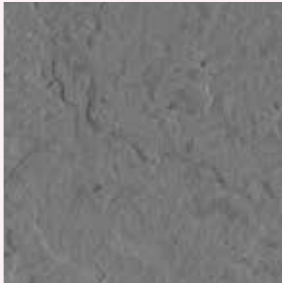
5171



5172



5175



5177



5178



5179

Stairtread norament® 926 arago

Flat, direction-oriented relief structure with fine grain design and modern marbling for extremely heavy-traffic stairwell areas. Improves footfall sound absorption by 12 dB.

**norament®
926 stairtreads**



7301



7302



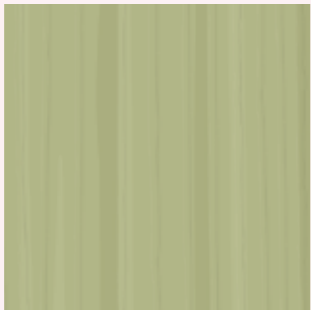
7303



7304



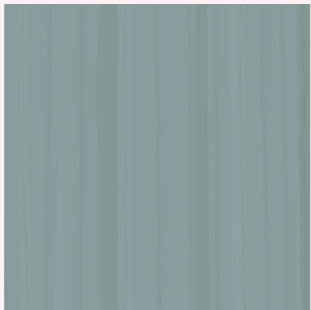
7305



7306



7307

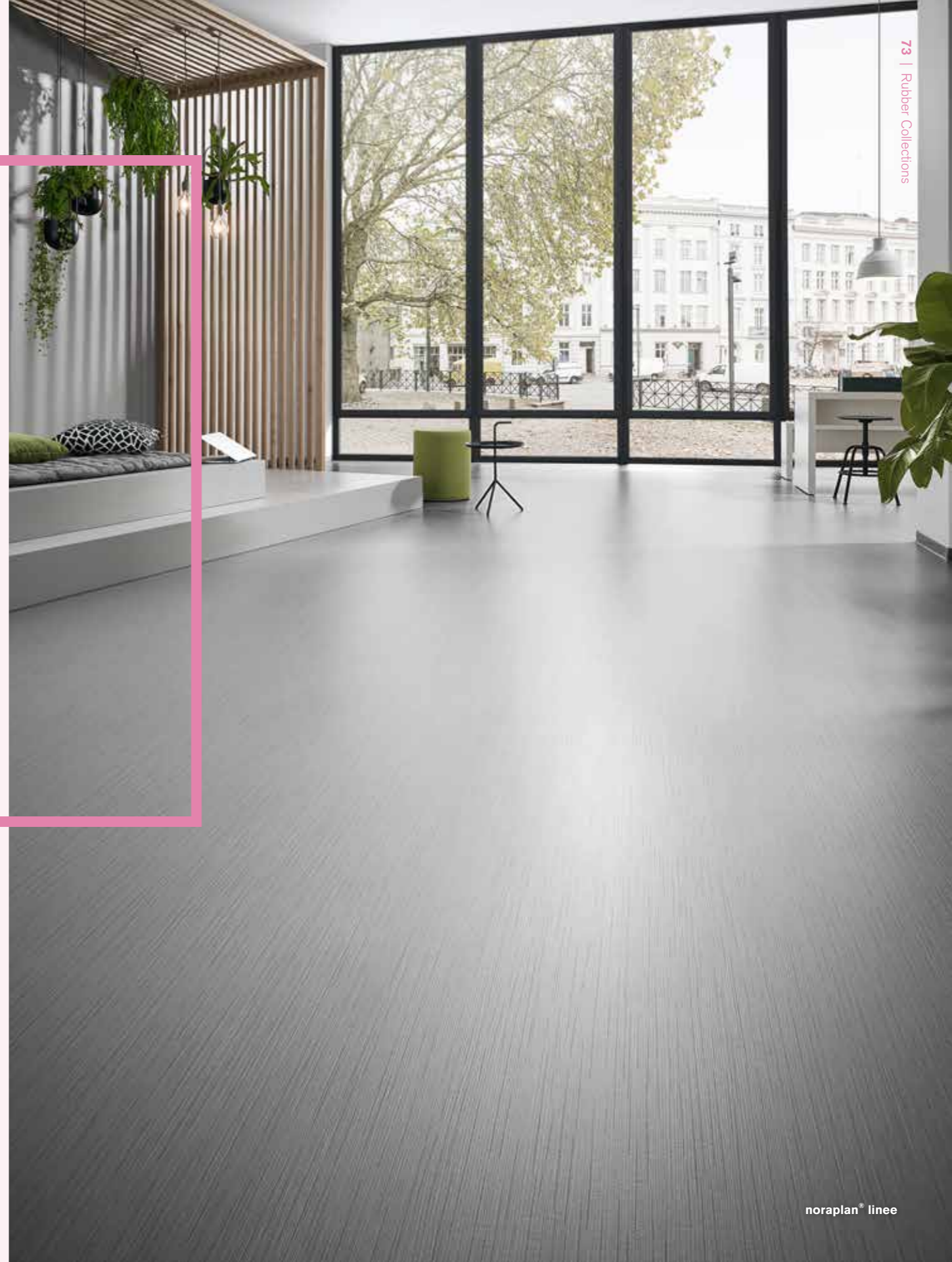


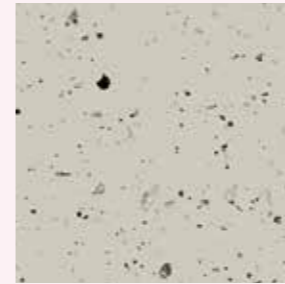
7308

noraplan® linee

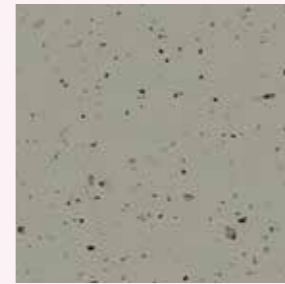
noraplan® linee

The rubber flooring with its directionally orientated line structure focuses on restrained colours to achieve a purist look. With four shades of grey and four understated colours, it offers you the right option for any environment. Combined with the structured surface, the lineation in light and dark gradations of the base colour gives rooms an additional perspective.

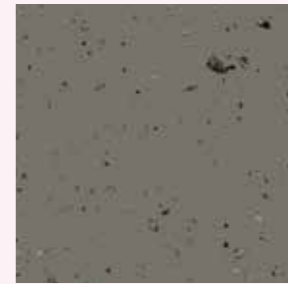




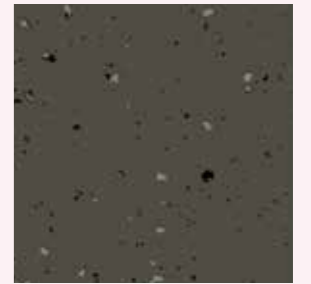
7101



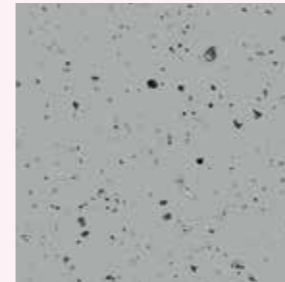
7102



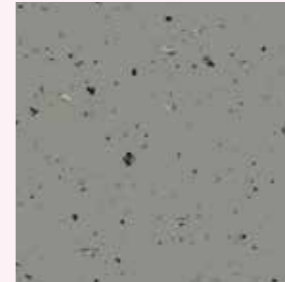
7103



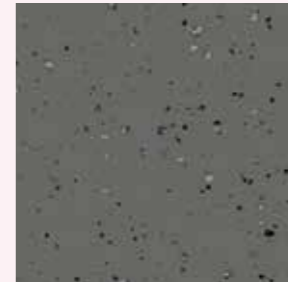
7104



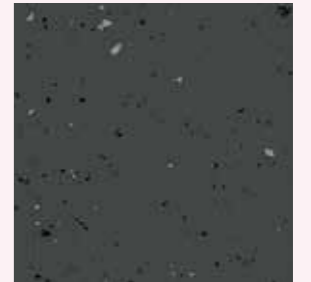
7105



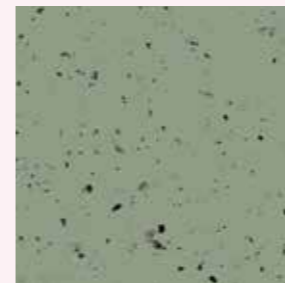
7106



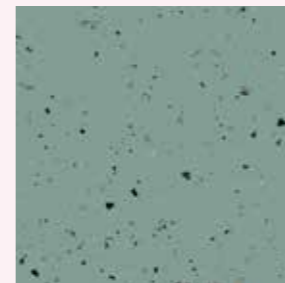
7107



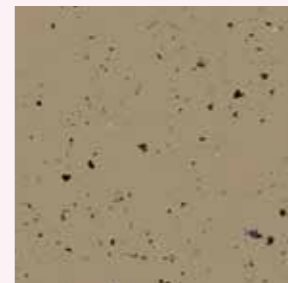
7108



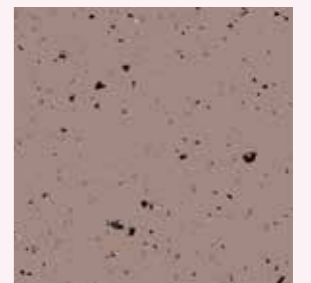
7109



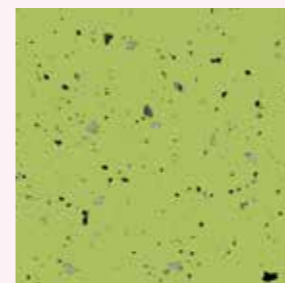
7110



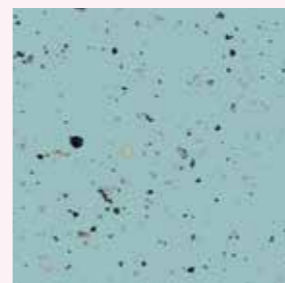
7111



7112



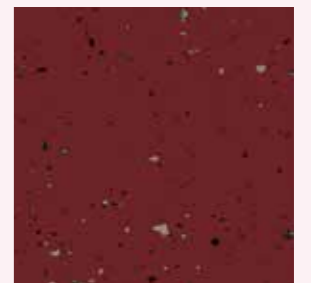
7113



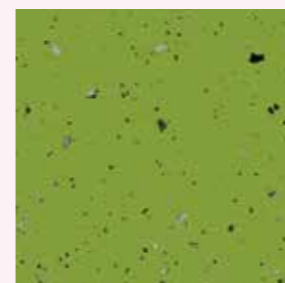
7114



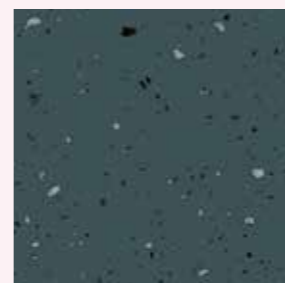
7115



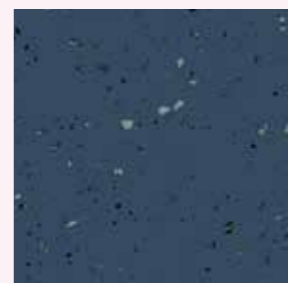
7116



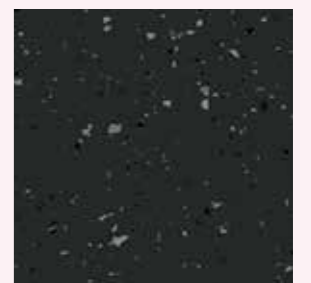
7117



7118



7119



7120

noraplan®
unita

noraplan® unita

When soft rubber and solid granite unite, something astonishing is made. Real granite chips embedded in a high-quality rubber floor covering create fascinating visual depth. This fusion of opposites results in a timeless and extremely appealing design that will give your project a distinctive character. Unique like the stars in the night sky.

Why Our Modular Carpet Tiles?

With modular flooring, you can mark out distinct areas to highlight architectural tures or reveal subtle surface details. Flooring becomes an adaptable part of your interior finishes. And it's entirely practical:

Better Acoustics

Hush disturbing footsteps and loud conversations. With our flooring, you get softer-feeling and greater noise reduction. You and your guests can be assured that noise reduction aspects are integrated across our product lines.

Easy to Maintain

Our carpet tiles are made with solution-dyed nylon to keep their colour over time, even when harsh cleaning products are used.

Less Waste

Installing a broadloom carpet creates up to 15% waste. We reduce that to 3 or 4%, and even less if using our non-directional products.

Choose flooring that respects the planet

All our products are carbon neutral. And because we know your flooring's impact, we can help with your carbon emission goals. We'll make sure the carbon impact of your flooring is offset – at no extra cost to you. And you'll receive a certificate to show guests you've chosen Carbon Neutral Floors™.

Why Our Modular Resilient LVT?

Integrated System

Say goodbye to transition strips and doubling up. Our modular resilient floorings are made to work as a system with our modular carpet tile. The compatible size and height of our products allows you to integrate modular carpet for an inset rug or an adjacent field – no transition strip required. You'll avoid doubling up on materials and save cost.

Real Flexibility

Create a unique look that lasts. Interface modular resilient LVT makes it easy to extend the life of your floor. From simple maintenance like damp mopping to selectively replacing damaged tiles, your flooring investment will stand the test of time - beautifully and effortlessly.

Circular System

Keep flooring out of the landfill. Our modular resilient LVT is produced with a controlled material stream so it can be reclaimed and recycled into our GlasBac™RE recycled content backing through our ReEntry® program.

And all our LVT products contain 39% recycled content, and are carbon neutral across their full product life cycle.

Noise Reduction

Less distractions. Interface is helping create **+Positive spaces™** with our LVT with Sound Choice™ backing, offering you best-in-class performance for reduced impact sound and floor to floor sound transmission.



The advantages of our nora[®] rubber

High durability

Establish an environment that can stand up to heavy traffic, rolling loads, and years of use. Wear-resistant nora rubber is manufactured for elasticity and density, providing a premium flooring solution that delivers reliable value, year after year. In some settings, nora floor coverings have been on the job for more than 30 years and still maintain a flawless appearance. Save yourself unnecessary renovation work and make your spaces enduringly usable and sustainable.

Permanent resilience

Create a pleasant and comfortable working environment. With the added cushioning of our rubber, every step you take is supported by excellent ergonomics and comfort underfoot. That's because nora is made of resilient material that eases the stress of walking and standing. That means less fatigue, and enhanced health.

Individualization with inlays or custom colours







Elevate your space. Floorings have an enormous impact on the interior and give rooms personality and life. With our rubber inlays, you have limitless room to individualize the flooring design. Or create your very own personal shade through a custom colour to accentuate the surfaces of your project.







Easy maintenance

Maintain a beautiful appearance. Our nora floor coverings convince with their excellent surface properties that ensure an economical and ecological cleaning process. The long-lasting and waterproof rubber facilitates the daily cleaning procedures ensuring an excellent impression day after day.







Carpet Technical Specifications







| | Sampa | City of Angels | A Cut Above | Head Over Heels | | |
|---|---|--|---|--|--|--|
| | [page 17] | [page 19] | M0833 [page 21] | M0684 [page 23] | M0749 [page 25] | M0827 [page 27] |
| Product Definition | Tapestry Tufted Patterned Structured Tip Sheared Pile | Tapestry Tufted Patterned Structured Loop Tile | Tapestry Tufted Patterned Structured Tip Sheared Pile | Tapestry Tufted Patterned Structured Loop Tile | Tapestry Tufted Patterned Structured Loop Tile | Tapestry Tufted Patterned Structured Loop Tile |
| Pile Material | 100% Recycled Solution Dyed Nylon | 100% Recycled Solution Dyed Nylon | 100% Recycled Solution Dyed Nylon | 100% Recycled Solution Dyed Nylon | 100% Recycled Solution Dyed Nylon | 100% Recycled Solution Dyed Nylon |
| Pile Yarn Weight | 1228 g/m ² ± 5% | 1182 g/m ² ± 5% | 888 g/m ² ± 5% | 844 g/m ² ± 5% | 844 g/m ² ± 5% | 844 g/m ² ± 5% |
| Total Weight | 4848 g/m ² ± 5% | 4452 g/m ² ± 5% | 4643 g/m ² ± 5% | 4536 g/m ² ± 5% | 4536 g/m ² ± 5% | 4536 g/m ² ± 5% |
| Pile Height | 5.2 mm + 15% / - 10% | 4.5 mm + 15% / - 10% | 4.2 mm + 15% / - 10% | 3.8 mm + 15% / - 10% | 3.5 mm + 15% / - 10% | 3.6 mm + 15% / - 10% |
| Total Thickness | 9.5 mm ± 0.5 mm | 8.2 mm ± 0.5 mm | 9.1 mm ± 0.5 mm | 8.1 mm ± 0.5 mm | 8.1 mm ± 0.5 mm | 8.1 mm ± 0.5 mm |
| Gauge / ends per 10 cm | 1/10 – 39.4 | 1/10 – 39.4 | 1/10 – 39.4 | 1/10 – 39.4 | 1/10 – 39.4 | 1/10 – 39.4 |
| Tuft per m ² | 141,840 ± 5% | 165,480 ± 5% | 110,320 ± 5% | 110,320 ± 5% | 110,320 ± 5% | 110,320 ± 5% |
| Backing Type | CQuest™Bio | CQuest™Bio | CQuest™Bio | CQuest™Bio | CQuest™Bio | CQuest™Bio |
| Wear Classification EN 1307 | Heavy Contract Class 33 / LC3 | Heavy Contract Class 33 / LC3 | Heavy Contract Class 33 / LC3 | Heavy Contract Class 33 / LC2 | Heavy Contract Class 33 / LC2 | Heavy Contract Class 33 / LC2 |
| Rating of Sound Absorption EN ISO 11654 | α _w 0.20 | α _w 0.20 | α _w 0.20 | α _w 0.20 | α _w 0.20 | α _w 0.20 |
| Style | 8192 | 8130 | 7274 | 6640 | 6640 | 6640 |
| Tile Size | 50 x 50cm | 50 x 50cm | 100 x 100cm | 100 x 100cm | 100 x 100cm | 100 x 100cm |
| Tiles per box | 12 | 16 | Palletised | Palletised | Palletised | Palletised |
| Carbon Footprint | 4,80 kg CO ₂ | 4,60 kg CO ₂ | 3,90 kg CO ₂ | 3,70 kg CO ₂ | 3,70 kg CO ₂ | 3,70 kg CO ₂ |
| Recycled Content | 83,8% | 83,5% | 82,6% | 82,4% | 82,4% | 82,4% |

| | | | | | |
|--|---|--|---|--|--|
|  <p>DOP: 1037-128457</p> <p>EN 14041:2004 Notified Body - 0493</p> <p>COC 0493 – CPR – 0181</p> <p>For use as floor covering in buildings</p> |  <p>DOP: 1037-128457</p> <p>EN 14041:2004 Approved Body - 0321</p> <p>COC 0321/20664-02/E00-00</p> <p>For use as floor covering in buildings</p> |  <p>DOP: 1037-128449</p> <p>EN 14041:2004 Notified Body - 0493</p> <p>COC 0493 – CPR – 0181</p> <p>For use as floor covering in buildings</p> |  <p>DOP: 1037-128449</p> <p>EN 14041:2004 Approved Body - 0321</p> <p>COC 0321/20664-02/E00-00</p> <p>For use as floor covering in buildings</p> |  <p>DOP: 1037-128592</p> <p>EN 14041:2004 Notified Body - 0493</p> <p>COC 0493 – CPR – 0181</p> <p>For use as floor covering in buildings</p> |  <p>DOP: 1037-128592</p> <p>EN 14041:2004 Approved Body - 0321</p> <p>COC 0321/20664-02/E00-00</p> <p>For use as floor covering in buildings</p> |
|--|---|--|---|--|--|

| | | | | | |
|--|---|--|---|--|---|
|  <p>DOP: 1037-128385</p> <p>EN 14041:2004 Notified Body - 0493</p> <p>COC 0493 – CPR – 0181</p> <p>For use as floor covering in buildings</p> |  <p>DOP: 1037-128385</p> <p>EN 14041:2004 Approved Body - 0321</p> <p>COC 0321/20664-02/E00-00</p> <p>For use as floor covering in buildings</p> |  <p>DOP: 1037-128385</p> <p>EN 14041:2004 Notified Body - 0493</p> <p>COC 0493 – CPR – 0181</p> <p>For use as floor covering in buildings</p> |  <p>DOP: 1037-128385</p> <p>EN 14041:2004 Approved Body - 0321</p> <p>COC 0321/20664-02/E00-00</p> <p>For use as floor covering in buildings</p> |  <p>DOP: 1037-128385</p> <p>EN 14041:2004 Notified Body - 0493</p> <p>COC 0493 – CPR – 0181</p> <p>For use as floor covering in buildings</p> |  <p>DOP: 1037-128385</p> <p>EN 14041:2004 Approved Body - 0321</p> <p>COC 0321/20664-02/E00-00</p> <p>For use as floor covering in buildings</p> |
|--|---|--|---|--|---|







| | Head Over Heels | Hip Over History | RMS 607 | Collins Cottage | Overedge | Haptic |
|--|--|--|--|--|-----------------------------------|--|
| | M1032 [page 29] | M0939 [page 31] | [page 33] | [page 35] | [page 37] | [page 39] |
| Product Definition | Tapestry Tufted Patterned Structured Loop Tile | Tapestry Tufted Patterned Structured Loop Tile | Tapestry Tufted Patterned Structured Loop Tile | Tapestry Tufted Patterned Structured Loop Tile | Tufted Patterned Shag Cut Tile | Tapestry Tufted Patterned Structured Loop Tile |
| Tile Material | 100% Recycled Solution Dyed Nylon | 100% Recycled Solution Dyed Nylon | 100% Recycled Solution Dyed Nylon | 100% Recycled Solution Dyed Nylon | 100% Recycled Solution Dyed Nylon | 100% Recycled Solution Dyed Nylon |
| Tile Yarn Weight | 844 g/m² ± 5% | 814 g/m² ± 5% | 832 g/m² ± 5% | 882 g/m² ± 5% | 1424 g/m² ± 5% | 814 g/m² ± 5% |
| Total Weight | 4536 g/m² ± 5% | 4326 g/m² ± 5% | 4270 g/m² ± 5% | 4364 g/m² ± 5% | 4769 g/m² ± 5% | 4284 g/m² ± 5% |
| Tile Height | 3.9 mm + 15% / - 10% | 3.5 mm + 15% / - 10% | 4.1 mm + 15% / - 10% | 3.9 mm + 15% / - 10% | 8.9 mm + 15% / - 10% | 2.9 mm + 15% / - 10% |
| Total Thickness | 8.1 mm ± 0.5 mm | 7.7 mm ± 0.5 mm | 8.2 mm ± 0.5 mm | 7.8 mm ± 0.5 mm | 11.6 mm ± 0.5 mm | 6.9 mm ± 0.5 mm |
| Gauge / Ends per 10 cm | 1/10 – 39.4 | 1/10 – 39.4 | 1/10 – 39.4 | 1/10 – 39.4 | 5/32 – 25.2 | 1/10 – 39.4 |
| tuft per m² | 110,320 ± 5% | 118,200 ± 5% | 110,320 ± 5% | 124,110 ± 5% | 91,210 ± 5% | 138,306 ± 5% |
| Backing Type | CQuest™Bio | CQuest™Bio | CQuest™Bio | CQuest™Bio | CQuest™Bio | CQuest™Bio |
| Wear Classification EN 1307 | Heavy Contract Class 33 / LC2 | Heavy Contract Class 33 / LC2 | Heavy Contract Class 33 / LC2 | Heavy Contract Class 33 / LC2 | General Contract Class 32 / LC5 | Heavy Contract Class 33 / LC2 |
| Rating of Sound Absorption EN ISO 11654 | α _w 0.20 | α _w 0.20 | α _w 0.20 | α _w 0.20 | α _w 0.20 | α _w 0.20 |
| Style | 6640 | 7191 | 7179 | 8152 | 9271 | 9274 |
| Tile Size | 50 x 50cm | 100 x 100cm | 50 x 50cm | 50 x 50cm | 25 x 100cm | 25 x 100cm |
| Tiles per box | 16 | Palletised | 16 | 16 | 10 | 20 |
| Carbon Footprint | 3,70 kg CO ₂ | 3,70 kg CO ₂ | 3,70 kg CO ₂ | 3,53 kg CO ₂ | 5,21 kg CO ₂ | 3,33 kg CO ₂ |
| Recycled Content | 82,4% | 82,1% | 82,1% | 84,1% | 84,7% | 83,9% |

| | | | | | |
|--|---|--|---|--|--|
|  DOP: 1037-128385 EN 14041:2004 Notified Body - 0493 COC 0493 – CPR – 0181 For use as floor covering in buildings |  DOP: 1037-128385 EN 14041:2004 Approved Body - 0321 COC 0321/20664-02/E00-00 For use as floor covering in buildings |  DOP: 1037-128455 EN 14041:2004 Notified Body - 0493 COC 0493 – CPR – 0181 For use as floor covering in buildings |  DOP: 1037-128455 EN 14041:2004 Approved Body - 0321 COC 0321/20664-02/E00-00 For use as floor covering in buildings |  DOP: 1037-128450 EN 14041:2004 Notified Body - 0493 COC 0493 – CPR – 0181 For use as floor covering in buildings |  DOP: 1037-128450 EN 14041:2004 Approved Body - 0321 COC 0321/20664-02/E00-00 For use as floor covering in buildings |
|--|---|--|---|--|--|

| | | | | | |
|--|---|--|---|--|---|
|  <p>DOP: 1037-128381</p> <p>EN 14041:2004 Notified Body - 0493</p> <p>COC 0493 – CPR – 0181</p> <p>For use as floor covering in buildings</p> |  <p>DOP: 1037-128381</p> <p>EN 14041:2004 Approved Body - 0321</p> <p>COC 0321/20664-02/E00-00</p> <p>For use as floor covering in buildings</p> |  <p>DOP: 1037-127049</p> <p>EN 14041:2004 Notified Body - 0493</p> <p>COC 0493 – CPR – 0182</p> <p>For use as floor covering in buildings</p> |  <p>DOP: 1037-127049</p> <p>EN 14041:2004 Approved Body - 0321</p> <p>COC 0321/21671-01/E00-00</p> <p>For use as floor covering in buildings</p> |  <p>DOP: 1037-127030</p> <p>EN 14041:2004 Notified Body - 0493</p> <p>COC 0493 – CPR – 0181</p> <p>For use as floor covering in buildings</p> |  <p>DOP: 1037-127030</p> <p>EN 14041:2004 Approved Body - 0321</p> <p>COC 0321/20664-02/E00-00</p> <p>For use as floor covering in buildings</p> |
|--|---|--|---|--|---|

Carpet Technical Specifications

| | Decibel | Darning | Hydropolis |
|--|--|--|-------------------------------------|
| | [page 41] | [page 43] | [page 45] |
| Product Definition | Tapestry Tufted Patterned Structured Loop Tile | Tapestry Tufted Patterned Structured Loop Tile | Tufted Patterned Textured Loop Pile |
| Pile Material | 100% Recycled Solution Dyed Nylon | 100% Recycled Solution Dyed Nylon | 100% Recycled Solution Dyed Nylon |
| Pile Yarn Weight | 746 g/m² ± 5% | 746 g/m² ± 5% | 795 g/m² ± 5% |
| Total Weight | 4096 g/m² ± 5% | 4224 g/m² ± 5% | 4151 g/m² ± 5% |
| Pile Height | 3.2 mm +15% / - 10% | 3.3 mm +15% / - 10% | 3.6 mm +15% / - 10% |
| Total Thickness | 7.0 mm ± 0.5 mm | 6.9 mm ± 0.5 mm | 7.0 mm ± 0.5 mm |
| Gauge / ends per 10 cm | 1/10 – 39.4 | 1/10 – 39.4 | 1/12 – 47.2 |
| Tuft per m² | 143,908 ± 5% | 137,942 ± 5% | 189,911 ± 5% |
| Backing Type | CQuest™Bio | CQuest™Bio | CQuest™Bio |
| Wear Classification EN 1307 | Heavy Contract Class 33 / LC2 | Heavy Contract Class 33 / LC2 | Heavy Contract Class 33 / LC3 |
| Rating of Sound Absorption EN ISO 11654 | α _w 0.20 | α _w 0.20 | α _w 0.20 |
| Style | 9275 | 9273 | 4236 |
| Tile Size | 25 x 100cm | 25 x 100cm | 50 x 50cm |
| Tiles per box | 20 | 20 | 16 |
| Carbon Footprint | 3,12 kg CO ₂ | 3,12 kg CO ₂ | 3,61 kg CO ₂ |
| Recycled Content | 83,6% | 83,6% | 83,8% |

| | | | | | |
|---|--|---|--|---|--|
|  DOP: 1037-127009 EN 14041:2004 Notified Body - 0493 COC 0493 – CPR – 0182 For use as floor covering in buildings |  DOP: 1037-127009 EN 14041:2004 Approved Body - 0321 COC 0321/21671-01/E00-00 For use as floor covering in buildings |  DOP: 1037-127008 EN 14041:2004 Notified Body - 0493 COC 0493 – CPR – 0181 For use as floor covering in buildings |  DOP: 1037-127008 EN 14041:2004 Approved Body - 0321 COC 0321/20664-02/E00-00 For use as floor covering in buildings |  DOP: 1037-128376 EN 14041:2004 Notified Body - 0493 COC 0493 – CPR – 0181 For use as floor covering in buildings |  DOP: 1037-128376 EN 14041:2004 Approved Body - 0321 COC 0321/20664-02/E00-00 For use as floor covering in buildings |
|---|--|---|--|---|--|



| | | |
|---|---|--|
|  33 GrL-s1 NCS |  33 BFL-s1 NCS |  33 BFL-s1 NCS |
|  ≥0,30 ≤2,0 kV 26dB 0.20 |  ≥0,30 ≤2,0 kV 26dB 0.20 |  ≥0,30 ≤2,0 kV ≤10°Ω 27dB 0.20 |
|  ≥7 ≥2.4 |  ≥7 ≥2.4 |  ≥7 ≥2.4 |
|  HERRINGBONE ASHLAR |  HERRINGBONE ASHLAR |  NON DIRECTIONAL ASHLAR |

Sound Absorption

| | EN ISO 354 | | | | | |
|------------------------|------------|-------|-------|--------|--------|--------|
| | 125HZ | 250HZ | 500HZ | 1000HZ | 2000HZ | 4000HZ |
| Sampa | -0.02 | 0.06 | 0.08 | 0.20 | 0.34 | 0.40 |
| A Cut Above MO833 | 0.04 | 0.05 | 0.09 | 0.22 | 0.45 | 0.58 |
| City Of Angels | 0.02 | 0.03 | 0.09 | 0.27 | 0.45 | 0.57 |
| Head Over Heels MO684 | 0.04 | 0.05 | 0.09 | 0.22 | 0.45 | 0.58 |
| Head Over Heels MO749 | 0.04 | 0.05 | 0.09 | 0.22 | 0.45 | 0.58 |
| Head Over Heels MO827 | 0.04 | 0.05 | 0.09 | 0.22 | 0.45 | 0.58 |
| Head Over Heels M1032 | 0.04 | 0.05 | 0.09 | 0.22 | 0.45 | 0.58 |
| Hip Over History M0939 | 0.04 | 0.05 | 0.09 | 0.22 | 0.45 | 0.58 |
| LC02 | 0.02 | 0.03 | 0.09 | 0.27 | 0.45 | 0.57 |
| LC05 | -0.02 | 0.06 | 0.08 | 0.20 | 0.34 | 0.40 |
| Portmanteau 19 | 0.02 | 0.03 | 0.09 | 0.27 | 0.45 | 0.57 |
| Portmanteau 39 | 0.02 | 0.03 | 0.09 | 0.27 | 0.45 | 0.57 |
| Portmanteau 49 | 0.02 | 0.03 | 0.09 | 0.27 | 0.45 | 0.57 |
| RMS 607 | 0.04 | 0.05 | 0.09 | 0.22 | 0.45 | 0.58 |
| Collins Cottage | 0.02 | 0.03 | 0.09 | 0.27 | 0.45 | 0.57 |
| Mod Café | 0.02 | 0.03 | 0.09 | 0.27 | 0.45 | 0.57 |
| Hydropolis | -0.02 | 0.06 | 0.08 | 0.20 | 0.34 | 0.40 |
| Overedge | 0.02 | 0.06 | 0.11 | 0.27 | 0.41 | 0.51 |
| Haptic | 0.04 | 0.05 | 0.09 | 0.22 | 0.45 | 0.58 |
| Decibel | 0.04 | 0.05 | 0.09 | 0.22 | 0.45 | 0.58 |
| Darning | 0.04 | 0.05 | 0.09 | 0.22 | 0.45 | 0.58 |

LVT Product Specifications

| Product Definition | High Performance Luxury Vinyl Tile Contains 39% Pre-Consumer Recycled Content |
|-------------------------------|---|
| Finish | Ceramor™ - UV Stabilized Ceramic Bead Coating |
| Wear Layer Thickness | 0.55 mm (EN ISO 24340) |
| Total Weight | 6880 g/m² (EN ISO 23997) |
| Total Thickness | 4.5 mm (EN ISO 24346) |
| Backing Type | Sound Choice™ Acoustic Backing |
| Wear Classification | EN ISO 10874 33 Heavy Commercial / 42 General Light Industrial |
| Radiant Panel | Euroclass Bfl s1 (EN 13501) |
| Dimensional Stability | ≤ 0.25 % (ISO 23999) |
| Curling | ≤ 2 mm (ISO 23999) |
| Flexibility | Method A - Pass (EN ISO 24344) |
| Abrasion Resistance | Group T (EN 660-2) |
| Residual Indentation | ≤ 0.2 mm (EN ISO 24343-1) |
| Chemical Resistance | (EN ISO 26987) Very Good |
| Impact Sound Insulation (ΔLw) | 16 dB (EN ISO 10140-3) |
| Determination of Anti-Slip | R10 (unless mentioned in the table aside) |
| Pendulum Dry 4S | 36+ Low slip potential (BS 7976-2) |

| | |
|---|---|
|  |  |
| 17 | 21 |
| Interface European Manufacturing B.V. Industrielaan 15 3925 BD Scherpenzeel The Netherlands | Interface European Manufacturing B.V. Industrielaan 15 3925 BD Scherpenzeel The Netherlands |
| DOP PBRG – AHCK3R | DOP PBRG – AHCK3R |
| EN 14041:2004 Notified Body - 0493 | EN 14041:2004 Approved Body - 0321 |
| Resilient floor covering for internal use. | Resilient floor covering for internal use. |
| Classification Class 33/42 (EN ISO 10874) | Classification Class 33/42 (EN ISO 10874) |
| Reaction to fire Class Bfl-s1 (see EN 14041, clause 4.1) | Reaction to fire Class Bfl-s1 (see EN 14041, clause 4.1) |
| Slip resistance Class DS (See EN 14041, clause 4.5) | Slip resistance Class DS (See EN 14041, clause 4.5) |
| Formaldehyde E1 (see EN 14041, clause 4.3) | Formaldehyde E1 (see EN 14041, clause 4.3) |
| Anti-static <2.0kV (See EN14041, clause 4.6.1) | Anti-static <2.0kV (See EN14041, clause 4.6.1) |
| www.interface.com/lvt-emea | www.interface.com/lvt-emea |

50 x50cm - 2.5m² Box (EN ISO 24342)

- Iridescence
- Level Set Collection - Natural Stones
- Level Set Collection - Textured Stones
- Walk About
- Walk of Life
- Walk on By
- Walk the Aisle



25 x 100 cm - 2.5m² Box (EN ISO 24342)

- Brushed Lines
- Drawn Lines
- Level Set Collection - Natural Woodgrains
- Level Set Collection - Textured Woodgrains

- Studio Set



| Product | Colour No | Colour Name | Slip Resistance Ramp Test - R value |
|---|--|----------------------|-------------------------------------|
| Level Set Collection - Natural Stones | A00103 | Cool Impala Marble | R9 |
| Level Set Collection - Textured Stones | A00301 | Polished Cement | R9 |
| | A00302 | Cool Polished Cement | R9 |
| | A00303 | Warm Polished Cement | R9 |
| | A00304 | Emperador Gray | R9 |
| Level Set Collection - Natural Woodgrains | A00201 | Black Walnut | R9 |
| | A00203 | Chestnut | R9 |
| | A00204 | Beech | R9 |
| | A00205 | Storm | R9 |
| | A00206 | Winter Grey | R9 |
| | A00207 | Washed Wheat | R9 |
| | A00208 | Sand Dune | R9 |
| | Level Set Collection - Textured Woodgrains | A00403 | Distressed Hickory |
| A00407 | | White Wash | R9 |
| A00414 | | Antique Maple | R9 |

Interface European Manufacturing BV reserves the right to change or modify specifications. Please see website for latest specifications. We have tried our very best to accurately represent product colours. However, due to the nature of printed materials, colour of actual products may vary slightly. Please request a sample to see actual product colour.

LVT Technical Specifications



Level Set Natural Woodgrains A00205 Storm



Carbon Neutral Floors™

Visit interface.com/hospitality

Europe, Middle East & Africa

| | |
|----|---------------------------|
| AE | +971 556881979 |
| AT | +43 1 8102839 |
| BA | +387 33 522 534 |
| BE | +32 2 475 27 27 |
| BG | +359 2 808 303 |
| BY | +375 17 226 75 14 |
| CH | +41 44 913 68 00 |
| CZ | +42 0 233 087 111 |
| DE | +49 2151 3718 0 |
| DK | +45 33 79 70 55 |
| EE | +372 6518 313 |
| ES | +34 932 418 750 |
| EG | +(202) 3760 7818 |
| FR | +33 1 58 10 20 20 |
| GR | +30 211 2120820 |
| HR | +385 14 62 30 63 |
| HU | +36 1 349 6545 |
| IE | +353 1 679 8466 |
| IL | +972 97403034 |
| IT | +39 02 890 93678 |
| KZ | +7 495 234 57 27 |
| LT | +370 37 337332 |
| LV | +371 672 18 744 |
| NL | +31 33 277 5555 |
| ME | +381 11 414 92 00 |
| MK | +389 2 323 01 89 |
| NO | +47 23 12 01 70 |
| PL | +48 22 862 48 40 |
| PT | +351 217 122 740 |
| RO | +40 21 317 12 40/42/43/44 |
| RS | +381 11 414 92 00 |
| SA | +966 554622263 |
| SE | +468 241 230 |
| SK | +421 911 104 073 |
| SI | +386 8 205 4007 |
| TR | +90 212 365 5506 |
| UA | +38(044)238 27 67 |
| UK | +44 (0)800 3134465 |
| ZA | +27 11 608 4270 |

