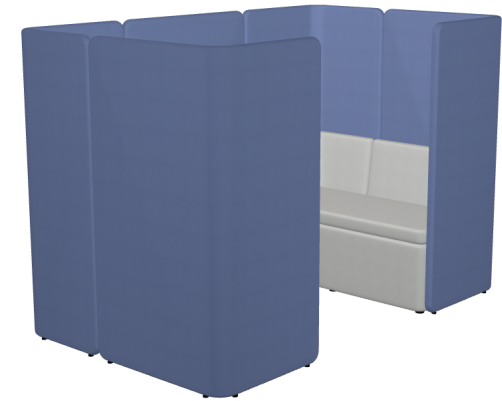


Kaiva

meeting cubicle

Technical Data

- TV stand - steel, max size of 32-70", max weight 50 kg; equipped with cable cover;
- Worktop - MFC 28 mm, ABS edge;
- Natural wood - ash, with metal element, powder coated, coated with transparent varnish, profile 40 × 40 mm, spacer 10 mm between top and frame;
- Leveling - 10 mm range;
- Screen - wooden frame, upholstered, Sonic technology structure with A-class acoustics certificate;
- Seat - cut foam, upholstered;
- Backrest - plywood covered with foam, upholstered;
- Base - cube, wooden frame, upholstered;
- Dimensions: 2218 x 1330 mm, h. 1504 mm



Guarantee

.mdd products - 5 years.

Electrical components and fabric - 2 years.

Selected configuration

KAV11B

Fabric: Mica - 100% polyester

Seat colour: MC-2496-60000 Light grey

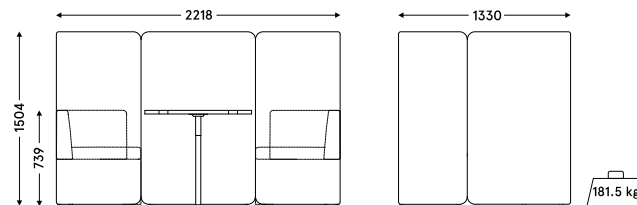
Panel colour: MC-2496-66030 Blue

TV Stand: No

Table: No

Top: Black

Weight: 186.85kg



Certificates

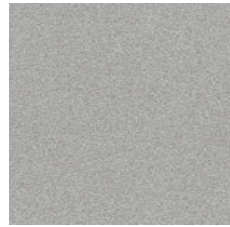


Sustainability

- Some of the available upholstery fabrics are made from post-consumer recycling.
- Sustainable production - we are not indifferent to the environmental impact of our furniture, therefore we provide the essential information on the lifecycle of our products via the Environmental Product Declaration.

Fabric technical data

Mica



Material	post-consumer recycled polyester 97%, polyester 3%
Weight	305g/m ²
Abrasion resistance rub	60,000 cycles Martindale, EN ISO 12947-2
Colour fastness to light	scale 1-8, max. 8 - EN ISO 105-B02, 5-8
Pilling resistance	scale 1-5, max. 5 - EN ISO 12945-2 EN ISO 12945-2, 4-5
Colour fastness to rubbing	dry: 4-5, wet: 4-5, scale 1-5, max. 5 - EN ISO 105x12
Flammability	CA TB 117-2013 ASTM E 84 class I BS EN 1021-1 cigarette BS EN 1021-2 Match BS 476 part 7 class I

Mica



Material	post-consumer recycled polyester 97%, polyester 3%
Weight	305g/m ²
Abrasion resistance rub	60,000 cycles Martindale, EN ISO 12947-2
Colour fastness to light	scale 1-8, max. 8 - EN ISO 105-B02, 5-8
Pilling resistance	scale 1-5, max. 5 - EN ISO 12945-2 EN ISO 12945-2, 4-5
Colour fastness to rubbing	dry: 4-5, wet: 4-5, scale 1-5, max. 5 - EN ISO 105x12
Flammability	CA TB 117-2013 ASTM E 84 class I BS EN 1021-1 cigarette BS EN 1021-2 Match BS 476 part 7 class I