



Printed on 50% post consumer waste (PCW) fiber manufactured using wind power.

We have tried our very best to accurately represent product colors. However, due to the nature of printed materials, color of actual products may vary slightly. Please request a sample to see actual product color.

www.interface.com

United States Headquarters

1503 Orchard Hill Road
LaGrange, GA 30240
1.800.336.0225 ext.56511

Canadian Headquarters

233 Lahr Drive
Belleville, ON K8N 5S2
1.800.267.2149 ext.52128

Brazilian Headquarters

Rua Surubim, 577 - Conjuntos
73/74 7º Andar
04571-050 - São Paulo - SP
+ 55 11 2196 0900

Latin American Headquarters

Montes Urales # 415 Piso 6
Col. Lomas de Chapultepec
México City, D.F. 11000
Mexico
+ 52 55 6395 5100

CIM # IFS00795 12/2017

Ice Breaker



Mission Zero[®]
our promise to eliminate any
negative impact our company
may have on the environment
by the year 2020.

Interface[®]

Ice Breaker™

If you were a popsicle, what flavor would you be?

That's one way to warm up a room, but our favorite Ice Breaker is on the floor. Like any lead-in, it's a little provocative and ultimately puts everyone at ease. That is the magical combination—the excitement of the unpredictable with the reliability of the familiar.

The etched lines and angular gestures of Ice Breaker's surface create an organic geometry that moves fluidly and seamlessly across the floor in a non directional or monolithic installation. With twelve variations on *the* coveted neutral, Ice Breaker takes a deep dive into all the nuances of gray—warm and cool, light and dark.

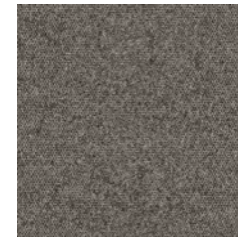
Following nature's model of similar things repeating in similar not identical ways, we have established a design approach that is the foundation of our i2® category. Ice Breaker is part of our i2 product family, offering the benefits of mergeable dye lots through similar, not identical, patterning and coloring. And because Ice Breaker installs non directionally, installation is faster and there's minimum waste. Learn more at [interface.com/i2](https://www.interface.com/i2).



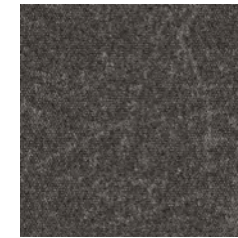




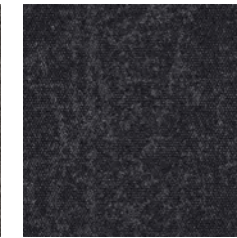
Ice Breaker Colorline



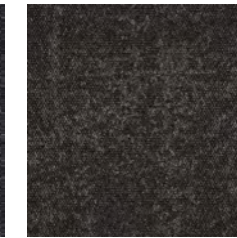
105770 CONCRETE



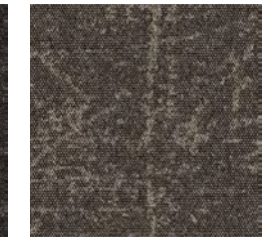
105771 GRANITE



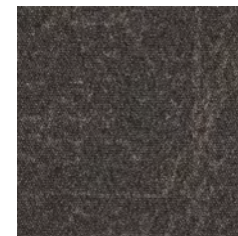
105772 BLUESTONE



105773 JETMIST



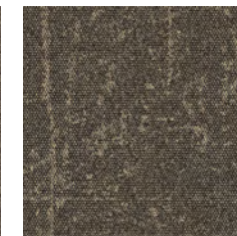
105775 QUARRY



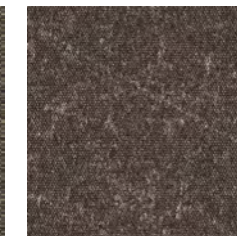
105776 AGATE



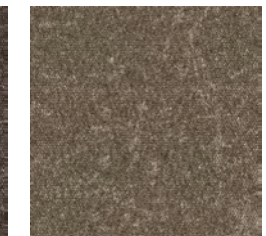
105778 MAGMA



105779 GRAYFOX



105780 BROWNSTONE



105782 CORNERSTONE



105784 WARM ROCK



105785 RARE EARTH

Specifications **i2**

Modular, 50cm x 50cm	1473002500
Backing System	GlasBac® Tile
Yarn Manufacturer	Universal
Yarn System	Post-Consumer Content Type 6,6 Nylon
Color System	100% Solution Dyed
Construction	Tufted Textured Loop
Lifetime Antimicrobial	Intersept®
Soil/Stain Protection	Protekt2®
Pile Thickness	0.071 in., 1.8 mm
Pile Density	8,620
Total Recycled Content	60%
Indoor Air Quality	CRI Green Label Plus #GLP0820



PRODUCT ICE BREAKER COLOR 105782 CORNERSTONE INSTALLED MONOLITHIC





i2® is undoubtedly one of our smartest and simplest innovations yet. It's smart because its mergeable dye lots minimize the need for attic stock and make selective replacement seamless.

And simple? We took our cue from nature, which designs organically without matching patterns or colors. Think of a natural forest and the various species of trees--different shapes, different colors, but still beautiful. Likewise, our i2 tiles vary in shape and color within one style and colorway so they blend, not match. Tiles work together even when purchased years apart. What a simple concept and a smart investment for your floor!



All product specifications reflect averages derived from product sample testing, are subject to normal manufacturing and testing tolerances and inherent pattern variances, and may be changed without notice. For more information about these and other important attributes of the product(s) described herein, including recycled content and product warranty information, please see www.interface.com/disclaimer.

Why Our Modular Carpet?



Modular Carpet Tile

Performance and Flexibility. Interface's standard backing systems set the industry standard for modular performance. Tiles stay on the floor with no upcurl, no tapping and no rippling effect, yet are easy to selectively replace. Our modular carpet is also easier to handle, install and maintain than bulky roll carpet. And, it installs with less waste so you save time and money.



Cool Floor™

The Low Carbon Option. Help stop climate change. ALL Interface modular flooring sold in North America is third party verified climate neutral Cool Floor. We start by using low-carbon materials and manufacturing processes, then Cool Floor zeros out all remaining greenhouse gas (GHG) emissions associated with the entire life cycle of your flooring, from raw material extraction through use and recycling.



TacTiles®

No Glue Installation. Our revolutionary TacTiles installation system eliminates the need for glue, adhering tiles securely together to form a floor that "floats" for greater flexibility, easier replacement and long-term performance. The result? Less mess, less waste and virtually no VOCs, not to mention an environmental footprint that is over 90% lower than that of traditional glue adhesives.



Intersept®

Mold Protection. Our proprietary preservative, Intersept, protects our modular carpet against mold growth and odor-causing bacteria—guaranteed. Intersept treated carpet, with proper maintenance, shows no mold or bacterial growth when tested per the ASTM E2471 Standard Test Method. Intersept is EPA approved for safe use in carpet, water insoluble and contains no halogens, heavy metals, phenols or formaldehyde.



ReEntry®

Recyclable is Now a Reality. Through our ReEntry program and partnerships with our fiber suppliers and recycling centers throughout North America, while separated Type 6 and 6,6 nylon are recycled into new 6 and 6,6 nylon while while separated GlasBac®, GlasBacRE and similar competitor backings are recycled into new GlasBacRE non-virgin PVC backing using our Cool Blue™ technology. The result? Products with up to 89% total recycled content, including as much as 27% post-consumer content.



Sustainable Choice

Environmental Responsibility. More than 95% of Interface products manufactured in the Americas carry the GreenCircle Certified Environmental Facts label, which has verified that standard Interface products are manufactured using 99% renewable energy and offer a minimum of 66% and 80% total recycled content when backed with GlasBac and GlasBacRE backing respectively. All Interface products include published HPDs (Health Product Declarations) or Declare Labels and more than 99% have a published EPD (Environmental Product Declaration) globally, and all products produced in the Americas are NSF/ANSI 140 gold or platinum certified.

Third Party Certification

cool floor™

Cool Floor – Our third party verified carbon offset program zeroes out all greenhouse gas (GHG) emissions associated with the entire life cycle of your flooring.



Environmental Product Declaration (EPD) – A statement of product ingredients and environmental impacts over the entire life cycle of a product. A comprehensive life cycle assessment (LCA) is performed to ISO standards to develop an EPD, after which both the EPD and LCA must be third party verified.



Sustainable Assessment for Carpet – The only carpet sustainability standard in North America that evaluates the environmental impact of carpet for its entire lifecycle.



CRI Green Label Plus – An independent testing program that identifies carpet and adhesives with very low emissions of VOCs to help improve indoor air quality.