

www.interface.com

United States Headquarters

1280 West Peachtree Street NW
Atlanta, GA 30309
1.800.634.6032

Canadian Headquarters

233 Lahr Drive
Belleville, ON K8N 5S2
1.800.267.2149 ext.52128

Brazilian Headquarters

Rua Surubim, 577 - Conjuntos
73/74 7º Andar
04571-050 - São Paulo - SP
+ 55 11 2196 0900

Latin American Headquarters

Montes Urales # 415 Piso 6
Col. Lomas de Chapultepec
México City, CDMX, 11000
Mexico
+ 52 55 2791 6812

CIM # IFS00887 10/2020



Climate change is undeniable. And reversible. Our mission is to prove it.
Join the #ClimateTakeBack and help create a climate fit for life.

Urban Retreat
202, 301, 302 & 501



Interface®

Urban Retreat™ Collection

Our original biophilic-inspired carpet tile collection, Urban Retreat explores shifts between color, form and texture with styles that smoothly transition from one to another across the floor.

Urban Retreat is a dynamic collection of eleven carpet tile products that range from refined textures to broad organic forms. It explores where concrete gives way to grass and looks at the deeply carved character of an old growth tree set against the architecture of a manmade grid.

With its natural, neutral color palette, Urban Retreat evokes the quiet and sanctuary of an old-growth forest floor down to the occasional moss or lichen-covered stone, as well as the cool splendor of glass and steel.

Urban Retreat carpet tile is made with recycled nylon, and as part of Interface's commitment to Climate Take Back®, all of the products we sell are carbon neutral across their full life cycle.



PRODUCT UR301 COLOR 103519 STRAW INSTALLED NON DIRECTIONAL







UR202™ Colorline



102959 BARK



102960 CHARCOAL



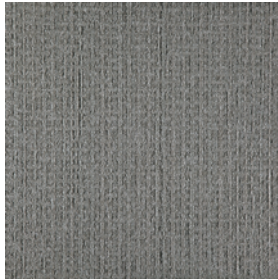
102961 STRAW



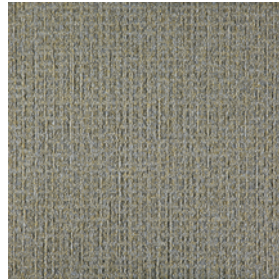
102962 GRANITE



102963 FLAX



102964 STONE



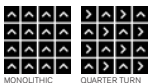
102965 SAGE



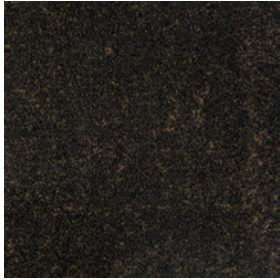
102966 ASH

Specifications

Modular, 50cm x 50cm	126980250H
Backing System	GlasBac®RE Tile
Yarn Manufacturer	Aquafil
Yarn System	100% Recycled Content Nylon
Color System	100% Solution Dyed
Construction	Tufted Pattern Loop
Lifetime Antimicrobial	Intersept®
Soil/Stain Protection	Protekt ² ®
Pile Thickness	0.127 in., 3.2 mm
Pile Density	7,087
Total Recycled Content	92% (26% Post-Consumer)
Indoor Air Quality	CRI Green Label Plus #GLP0820



UR301™ Colorline



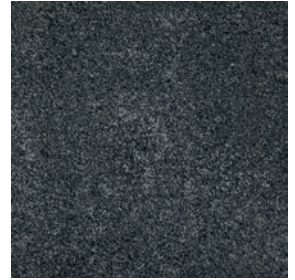
103517 BARK



103518 CHARCOAL



103519 STRAW



103520 GRANITE



103521 FLAX



103522 STONE



103523 SAGE



103524 ASH

Specifications

Modular, 50cm x 50cm	127130250H
Backing System	GlasBac®RE Tile
Yarn Manufacturer	Aquafil
Yarn System	100% Recycled Content Nylon
Color System	100% Solution Dyed
Construction	Tufted Sheared
Lifetime Antimicrobial	Intersept®
Soil/Stain Protection	Protekt ² ®
Pile Thickness	0.102 in., 2.9 mm
Pile Density	9,176
Total Recycled Content	92% (26% Post-Consumer)
Indoor Air Quality	CRI Green Label Plus #GLP0820



NON DIRECTIONAL



PRODUCT UR301 COLOR 103521 FLAX INSTALLED NON DIRECTIONAL



UR302™ Colorline



102983 BARK



102984 CHARCOAL



102985 STRAW



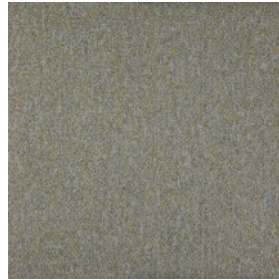
102986 GRANITE



102987 FLAX



102988 STONE



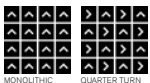
102989 SAGE



102990 ASH

Specifications

Modular, 50cm x 50cm	127000250H
Backing System	GlasBac®RE Tile
Yarn Manufacturer	Aquafil
Yarn System	100% Recycled Content Nylon
Color System	100% Solution Dyed
Construction	Tufted Pattern Loop
Lifetime Antimicrobial	Intersept®
Soil/Stain Protection	Protekt ² ®
Pile Thickness	0.092 in., 2.3 mm
Pile Density	8,217
Total Recycled Content	92% (25% Post-Consumer)
Indoor Air Quality	CRI Green Label Plus #GLP0820



UR501™ Colorline



103607 GOLD



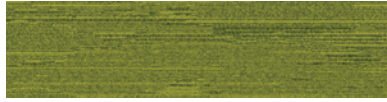
103608 MOSS



103609 BARK



103610 STRAW



103611 GRASS



103612 IVY



103613 FLAX



103614 SAGE



103615 BLUE



103616 NAVY



103617 ASH



103618 STONE



103619 ORANGE



103620 RED



103621 GRANITE



103622 CHARCOAL

Specifications

Modular, 25cm x 1m	127340AK0H
Backing System	GlasBac®RE Tile
Yarn Manufacturer	Aquafil
Yarn System	100% Recycled Content Nylon
Color System	100% Solution Dyed
Construction	Tufted Sheared
Lifetime Antimicrobial	Intersept®
Soil/Stain Protection	Protekt2®
Pile Thickness	0.146 in., 3.7 mm
Pile Density	6,164
Total Recycled Content	92% (26% Post-Consumer)
Indoor Air Quality	CRI Green Label Plus #GLP0820





PRODUCT UR501 COLOR 103617 ASH INSTALLED ASHLAR

Why Our Modular Flooring?



Modular Flooring

Performance and flexibility.

Interface's standard backing systems set the industry standard for modular performance. Tiles stay on the floor with no upcurl, no tapping and no rippling effect, yet are easy to selectively replace. Our modular carpet is easier to handle than bulky roll carpet and produces an average of just 3-4% waste compared to roll carpet's average of 14%. And it installs seamlessly with our LVT, no transition strips needed.



TacTiles™

No glue installation. Our revolutionary TacTiles installation system eliminates the need for glue, adhering tiles securely together to form a floor that "floats" for greater flexibility, easier replacement and long-term performance. The result? Less mess, less waste and virtually no VOCs, not to mention an environmental footprint that is over 90% lower than that of traditional glue adhesives. TacTiles are approved for use on GlasBac®, GlasBacRE, CQuest™GB, Graphlar™ and Graphlex™.



Intersept®

Mold protection. Our proprietary preservative, Intersept, protects our modular carpet against mold growth and odor-causing bacteria—guaranteed. Intersept treated carpet, with proper maintenance, shows no mold or bacterial growth when tested per the ASTM E2471 Standard Test Method. Intersept is EPA approved for safe use in carpet, water insoluble and contains no halogens, heavy metals, phenols or formaldehyde. Intersept is standard in Interface carpet tile products backed with GlasBac, GlasBacRE, CQuestGB, ReadyBac, and CushionBac Renew.

Samples

Order samples at www.interface.com. You'll receive email order confirmations, 24/7 access to order status and more. Not near a computer? You can also request samples by calling one of the numbers below.

United States
1.877.605.1500

Canada
1.866.398.3192

Brazil
+ 55 11 2196 0900

Latin America
+ 52 55 6395 5100

www.interface.com

Register at www.interface.com to:

- Browse products and order samples
- View carpet in a variety of room scenes
- Browse floor designs, change colors, view as a grid or in a room, download and share
- Use our LEED Calculator
- Check order status and inventory availability
- Sign up to get the latest information on Interface products and news

InterCircle Sample Return

Help us close the loop on the carpet sampling process. Through our InterCircle Sample Return program, sample materials stay out of the landfill and are re-used as samples until it is time to recycle them into new carpet. By reducing sample production material and diverting old materials from the landfill, we can reduce our overall environmental footprint.

Call 1.877.605.1500 (U.S.) or 1.866.398.3192 (Canada) to order a sample return bag with a prepaid return label.



ReEntry™

Recyclable is now a reality. Through our ReEntry program, we reclaim all Interface carpet tile and LVT. The result? Products with up to 85% total recycled content, including as much as 25% post-consumer content.



Sustainable Choice

Environmental responsibility. More than 95% of Interface products manufactured in the Americas carry the GreenCircle Certified Environmental Facts label, which has verified that standard Interface products are manufactured using 99% renewable energy and offer a minimum of 66% and 80% total recycled content when backed with GlasBac and GlasBacRE backing respectively.

Transparency and certified sustainability leadership come standard on all Interface products, including published ingredients in HPDs (Health Product Declarations) or Declare Labels. In addition, more than 99% of our products globally have a published EPD (Environmental Product Declaration), which evaluates consistent factors based on full life cycle assessment (LCA). And, all Interface products with GlasBacRE backing are certified to the Platinum level of the NSF/ANSI 140 Sustainable Assessment for Carpet. GlasBac backed products meet the Gold level. NSF/ANSI 140 certified products contribute toward a USGBC or CaGBC LEED credit.

Third Party Certification
Our Carbon Neutral Floors™ program is annually verified by a third party.



Environmental Product Declaration (EPD) – A statement of product ingredients and environmental impacts over the entire life cycle of a product. A comprehensive life cycle assessment (LCA) is performed to ISO standards to develop an EPD, after which both the EPD and LCA must be third party verified.



NSF Certified
NSF/ANSI 140 - 2007a
Content@Certification.com

Sustainable Assessment for Carpet – The only carpet sustainability standard in North America that evaluates the environmental impact of carpet for its entire lifecycle.



CRI Green Label Plus – An independent testing program that identifies carpet and adhesives with very low emissions of VOCs to help improve indoor air quality.



MIX
Paper from
responsible sources
FSC® C009723



PLEASE RECYCLE

Printed on 50% post consumer waste (PCW) fiber manufactured using wind power.

All product specifications reflect averages derived from product sample testing, are subject to normal manufacturing and testing tolerances and inherent pattern variances, and may be changed without notice. For more information about these and other important attributes of the product(s) described herein, including recycled content and product warranty information, please see www.interface.com/disclaimer.

We have tried our very best to accurately represent product colors. However, due to the nature of printed materials, color of actual products may vary slightly. Please request a sample to see actual product color.