



Level Set Collection | LVT  
Stones

Interface®

With thoughtful consideration for design, performance and a sustainable path, we've crafted a foundational collection of luxury vinyl tiles that fit perfectly into the Interface flooring systems.

Level Set Natural & Textured Stones is a selection of 50cm x 50cm squares in classic stone looks with patterns inspired by distressed, reclaimed and exposed materials. They're a perfect match for our Skinny Planks™ and square carpet tiles, it is also a perfect fit in terms of thickness. This means you can easily install our resilient and soft flooring to create an integrated floor or inset rug, and move effortlessly from surface to surface without transition strips.

We design all our products with the ability to feed ReEntry®, our reclamation program. And, of course, like all of our products made around the world, the Level Set Collection is carbon neutral—just some of the many steps we take toward creating a climate fit for life. Join the **#ClimateTakeBack** movement.



**PRODUCT** TEXTURED STONES **COLOR** A00303 WARM POLISHED CEMENT **INSTALLED** MONOLITHIC





**PRODUCT** TEXTURED STONES **COLOR** A00308 LIGHT CONCRETE **INSTALLED** BRICK





PRODUCT TEXTURED STONES COLOR A00304 EMPERADOR GRAY INSTALLED QUARTER TURN



[www.interface.com](http://www.interface.com)

LVT PRODUCT TEXTURED STONES COLOR A00303 WARM POLISHED CEMENT INSTALLED NON DIRECTIONAL  
FLOR PRODUCT MOD CAFÉ™ COLOR 105423 STAR CHARCOAL INSTALLED MONOLITHIC





LVT PRODUCT TEXTURED STONES COLOR A00301 POLISHED CEMENT INSTALLED NON DIRECTIONAL  
FLOR PRODUCT SCOTTISH SETT™ COLOR 105434 PLAID NATURAL INSTALLED MONOLITHIC

## Specifications

Product Number	A001 ( <i>Natural Stones</i> )
Product Number	A003 ( <i>Textured Stones</i> )
Product Construction	High Performance Luxury Vinyl Tile
Class / ASTM F1700	Class III Printed Vinyl Tile
Wear Layer Thickness	22 mil
Total Thickness	4.5 mm
Backing Class	Commercial Grade
Finish	Ceramor™ Coating
Nominal Dimensions	50cm x 50cm (19.69 in x 19.69 in)

### Performance

IIC Sound Rating	(ASTM E492-09) 57 IIC
Slip Resistance	(ASTM D2047) >0.55 wet/dry, ADA Compliant
Static Load Limit	(ASTM F970) 1500 psi
Flexibility	(ASTM F137) Passes
Resistance to Heat	(ASTM F1514) Passes
Resistance to Light	(ASTM F1515) Passes
Radiant Flux	(ASTM E648) Class I
Smoke Density	(ASTM E662) Passes, ≤ 450
Size & Squareness	(ASTM F2055) Passes, +/- 0.016 in. per linear foot
Thickness	(ASTM F386) Passes
Dimensional Stability	(ASTM F2199) Passes
Residual Indentation	(ASTM F1914) Passes
Resistance to Chemicals	(ASTM F925) Passes

### Environmental

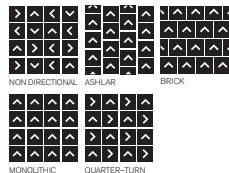
Indoor Air Quality	FloorScore®/CDPH 01350 Certified for low-VOC emissions
Material Composition	Free of Ortho Phthalates, Added Formaldehyde and Heavy Metal Stabilizers
Ingredients & Life Cycle Impacts	Environmental Product Declaration
Carbon Footprint	3rd Party Verified Carbon Neutral
Sustainability Assessment	NSF/ANSI 332, Meets Certification Guidelines
LEED v4	Contributes to IEC: <i>Low Emitting Materials</i> ; M&R: <i>EPD</i> and <i>EPR</i>
End of Life	Fully Recyclable LVT to Carpet Tile Backing

### Packaging

Square Feet per Carton	26.91 sq. ft. (2.5 m <sup>2</sup> )
Pieces per Carton	10
Weight per Carton	40 lbs (18 kg)
Cartons per Pallet	40
Pallets per Truckload	20

### Technical Information

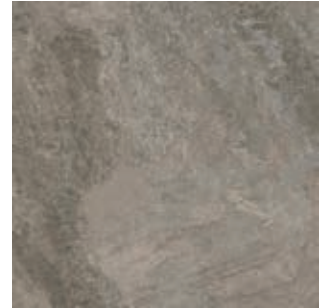
Installation	See Interface LVT Installation Guidelines online
Maintenance	See Interface LVT Maintenance Guidelines online
Reclamation	Recyclable through ReEntry® - Call 1.888.733.6873 (U.S.) / 1.866.398.3191 (Canada)
Warranty	15 Year Limited Commercial Warranty
Installation Methods	Non Directional, Ashlar, Brick, Monolithic, Quarter-Turn



## Natural Stones Colorline



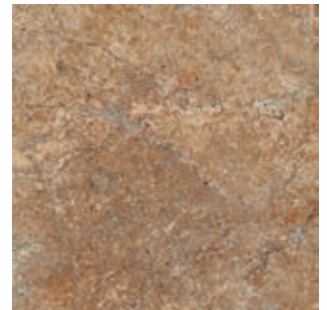
A00101 JET MIST



A00104 WARM IMPALA MARBLE



A00102 MARONE DARK MARBLE



A00105 PIETRASANTA WARM MARBLE



A00103 COOL IMPALA MARBLE

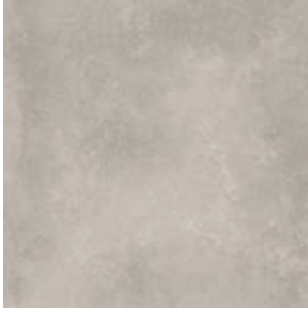


A00106 BOTTICINO MARBLE

All product specifications reflect averages derived from product sample testing, are subject to normal manufacturing and testing tolerances and inherent pattern variances, and may be changed without notice. For more information about these and other important attributes of the product(s) described herein, including recycled content and product warranty information, please see our full LVT product disclaimer @ interface.com.

## Textured Stones Colorline

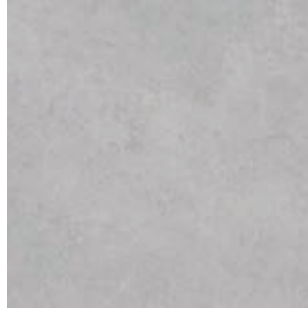
---



A00301 POLISHED CEMENT



A00304 EMPERADOR GRAY



A00308 LIGHT CONCRETE



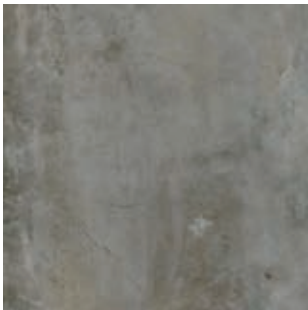
A00302 COOL POLISHED CEMENT



A00305 EMPERADOR TAUPE



A00309 MEDIUM CONCRETE




A00303 WARM POLISHED CEMENT



A00306 JERSEY MARBLE



A00310 DARK CONCRETE



Interface Modular Resilient LVT  
and Modular Carpet allow you to  
seamlessly move from hard to soft  
surfaces. No transition strip needed.

**LVT PRODUCT** TEXTURED STONES **COLOR** A00310 DARK CONCRETE  
**CARPET PRODUCT** PLAIN STITCH™ **COLOR** 105918 GRAPHITE PLAIN

## Integrated System.

*Say goodbye to transition strips and doubling up.* Our modular resilient floorings are made to work as a system with our modular carpet. The compatible size and height of our products allows you to integrate modular carpet for an inset rug or an adjacent field – no transition strip required. You'll avoid doubling up on materials and save money.

## Real Flexibility.

*Create a unique look that lasts.* Interface modular resilient LVT makes it easy to extend the life of your floor. From simple maintenance like damp mopping to selectively replacing damaged tiles, your flooring investment will stand the test of time - beautifully and effortlessly.

## Circular System.

*Keep flooring out of the landfill.* Our modular resilient LVT is produced with a controlled material stream so it can be reclaimed and recycled into our GlasBac®RE recycled content backing through our ReEntry® program.

## Noise Reduction.

*Silence distractions.* Interface is helping create +Positive spaces™ with our LVT with Sound Choice backing. Sound Choice is a specially formulated backing developed for superior noise reduction, offering you best-in-class performance for reduced impact sound and floor to floor sound transmission.



## High Performance from Top to Bottom.

- 1. Ceramor™ Coating.** Minimizes everyday scratching and scuffing.
- 2. Wear Layer.** High quality layer enabling 15 years of resilience and performance.
- 3. Print Film.** Provides outstanding visuals of natural materials and Interface innovative designs.
- 4. Core Sheet.** Creates a thickness for a stronger core and reduces telegraphing from beneath.
- 5. Fiberglass.** Adds dimensional stability and controlled flexibility.
- 6. Core Sheet.** Creates a thickness for a stronger core and reduces telegraphing from beneath.
- 7. Sound Choice™.** Provides comfort and superior acoustic performance.

## Third Party Certification.

**Carbon Neutral Floors.** All Interface flooring sold globally is third party verified carbon neutral. We've taken a holistic approach to achieve carbon neutrality, first through reducing the carbon footprint of our products and then using carbon offsets for the remainder.

**Environmental Product Declaration (EPD).** Interface LVT products are covered by an EPD. An EPD provides a comprehensive statement of product ingredients and environmental impacts based upon life cycle assessment performed to ISO standards.

**Sustainable Assessment.** Interface LVT meets the certification standards of the NSF/ANSI 332 Sustainability Assessment for Resilient Floor Coverings. This standard evaluates the environmental impact of resilient floor covering for its entire lifecycle.

**Indoor Air Quality.** All Interface modular flooring products meet the highest standards for indoor air quality. Interface LVT is FloorScore® Certified, assuring very low emissions of VOCs.





LVT PRODUCT TEXTURED STONES COLOR A00306 JERSEY MARBLE INSTALLED NON DIRECTIONAL  
CARPET PRODUCT WORLD WOVEN™ | WW880 COLOR 105361 CHARCOAL LOOM INSTALLED ASHLAR



PLEASE RECYCLE

Printed on 50% post consumer waste (PCW) fiber manufactured using wind power.

We have tried our very best to accurately represent product colors. However, due to the nature of printed materials, color of actual products may vary slightly. Please request a sample to see actual product color.

[www.interface.com](http://www.interface.com)

**United States Headquarters**

1503 Orchard Hill Road  
LaGrange, GA 30240  
1.800.634.6032

**Canadian Headquarters**

233 Lahr Drive  
Belleville, ON K8N 5S2  
1.800.267.2149 ext.52128

**Brazilian Headquarters**

Rua Surubim, 577 - Conjuntos  
73/74 7º Andar  
04571-050 - São Paulo - SP  
+ 55 11 2196 0900

**Latin American Headquarters**

Montes Urales # 415 Piso 6  
Col. Lomas de Chapultepec  
México City, D.F. 11000  
Mexico  
+ 52 55 6395 5100

CIM # IFS00825 02/2019



Climate change is undeniable. And reversible. Our mission is to prove it. **Join the #ClimateTakeBack and help create a climate fit for life.**